



Australian Government

BUILDING OUR FUTURE



December 2017

Start of work – Glenugie Interchange to Eight Mile Lane Interchange, Glenugie.

The Australian and NSW governments are jointly funding the \$4.36 billion Woolgoolga to Ballina Pacific Highway upgrade. Roads and Maritime Services' Pacific Highway Project Office, Pacific Complete and its contractor partners are working together to deliver the project.

The Woolgoolga to Ballina Pacific Highway project team will start work on moving Telstra lines along the Old Pacific Highway, Glenugie from 9 February 2018. This work will take about 6 weeks to complete, weather permitting.

Access Point for work vehicles

Access will be via the northern end of Old Pacific Highway off current Pacific Highway at Glenugie. Machinery will include:

- Light vehicles
- 13 tonne and 20 tonne excavators
- Trucks.

Work to be carried out

Work will involve:

- Removing small areas of vegetation to dig a new trench for a fibre optic cable and ground boring
- Installing 115 metres of trenched fibre optic cable
- Installing 804 metres of under bore fibre optic cable
- Building three bore and retrieval pads.

Work hours

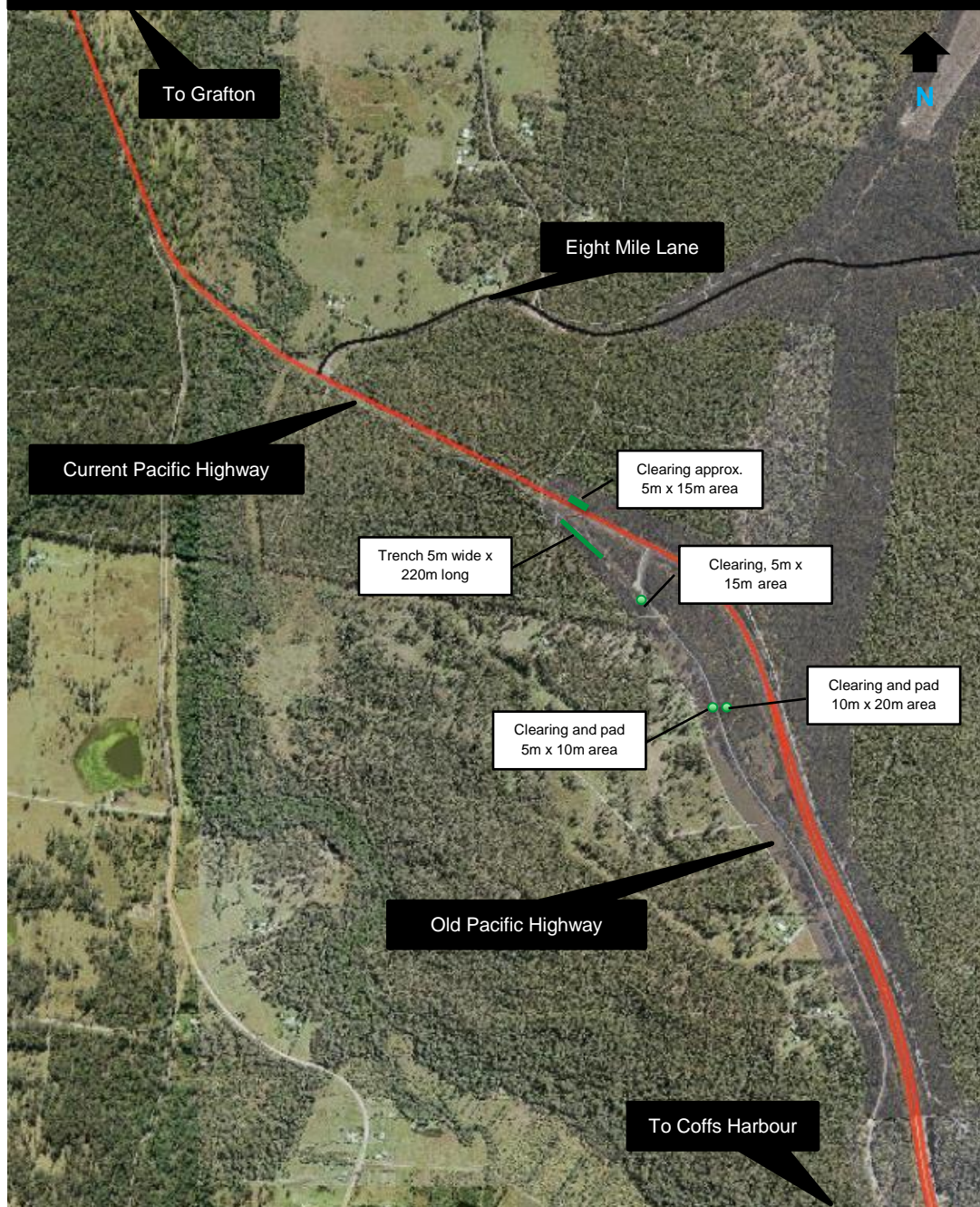
Typically work will be carried out during the project's approved construction hours, which are:



7am – 6pm Monday – Friday
8am – 5pm Saturdays

In areas where residents live more than 200 metres from the work area, extended work hours are allowed between 6am and 7am and 6pm and 7pm from Monday to Friday. Nearby residents will be notified at least five working days in advance of any activities scheduled outside of these working hours.

Telstra relocation works – Old Pacific Highway, Glenugie



For more information

If you have any questions, please contact the Woolgoolga to Ballina project on 1800 778 900 dial 1, W2B@pacificcomplete.com.au or visit the project website rms.nsw.gov.au/W2B.

We apologise for any inconvenience and thank you for your patience during this important work.



If you need help understanding this information, please contact the Translating and Interpreting Service on 131 450 and ask them to call us on 1800 778 900.