

July 2017

### **Woolgoolga to Ballina Pacific Highway upgrade – proposed Sunday work at Green Hill, Gulmarrad until 27 August**

Roads and Maritime Services has engaged Pacific Complete, comprising Laing O'Rourke and WSP, to partner with the Pacific Highway Project Office to deliver the 155 kilometre Woolgoolga to Ballina upgrade.

The Woolgoolga to Ballina project team will be working at the new highway site located at Green Hill, east of Gimberts Lane to excavate additional soil to accelerate our haulage program. This work will eliminate an additional two weeks of construction activity and will be completed by the end of August 2017, weather permitting. We have included a map of the work area.

To minimise impacts to local residents and complete the work to this timeline, we are seeking your feedback to carry out work at this site on Sundays from 8am to 4pm until Sunday 27 August.

The work will involve soil excavation using two bulldozers which will be serviced by one fuel truck and a light vehicle. There will be no heavy vehicle movements outside of the Greenhill work site and no additional construction activities including blasting or the use of other machinery.

#### **How will this work affect you?**

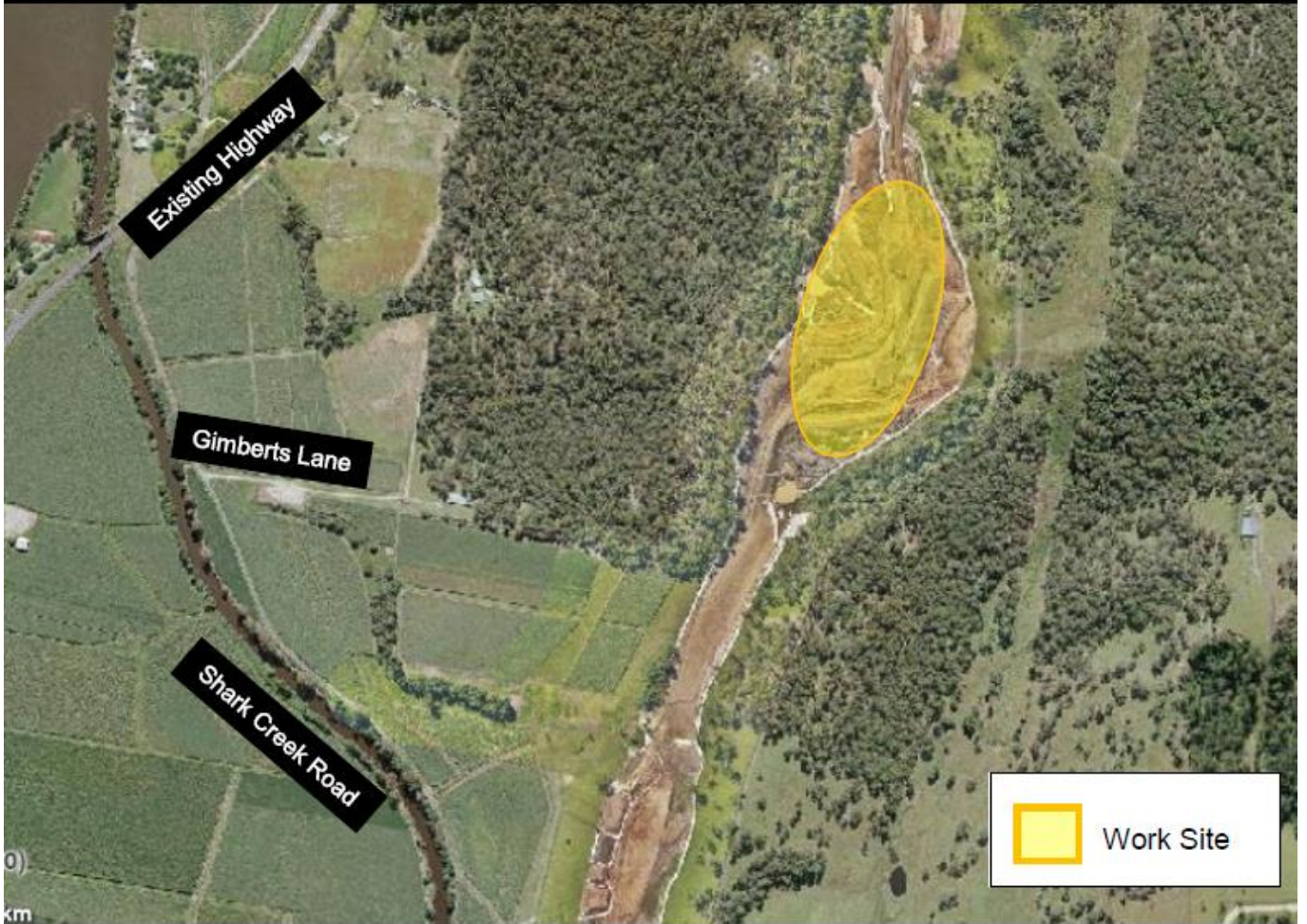
The work will involve the use of machinery, which will generate some noise. We will minimise the impact of noise as much as possible by:

- turning off machinery when not in use
- not using beeper type reversing alarms
- using radio communications only (no yelling, beeping or whistling)
- noise monitoring during the work.

For more information about the work please contact the project team on 1800 778 900, email [W2B@pacificcomplete.com.au](mailto:W2B@pacificcomplete.com.au) or visit the project website at [www.rms.nsw.gov.au/W2B](http://www.rms.nsw.gov.au/W2B).

We apologise for any inconvenience and thank you for your patience during this important work.

# Green Hill Work Site



0)  
km