



Australian Government

BUILDING OUR FUTURE



November 2017

Start of bridge work on Woolgoolga to Ballina Pacific Highway upgrade – James Creek and Harwood Island

The Australian and NSW governments are jointly funding the \$4.36 billion Woolgoolga to Ballina Pacific Highway upgrade. Roads and Maritime Services Pacific Highway Project Office and Pacific Complete are working together to deliver the project.

The Woolgoolga to Ballina project team is building 23 new bridges between Maclean and Devils Pulpit as well as the new bridge over the Clarence River at Harwood. Piling is almost complete on the new 150 metre single bridge at Farlows Flat, James Creek and the new 370 metre double bridges just north of Watts Lane, Harwood.

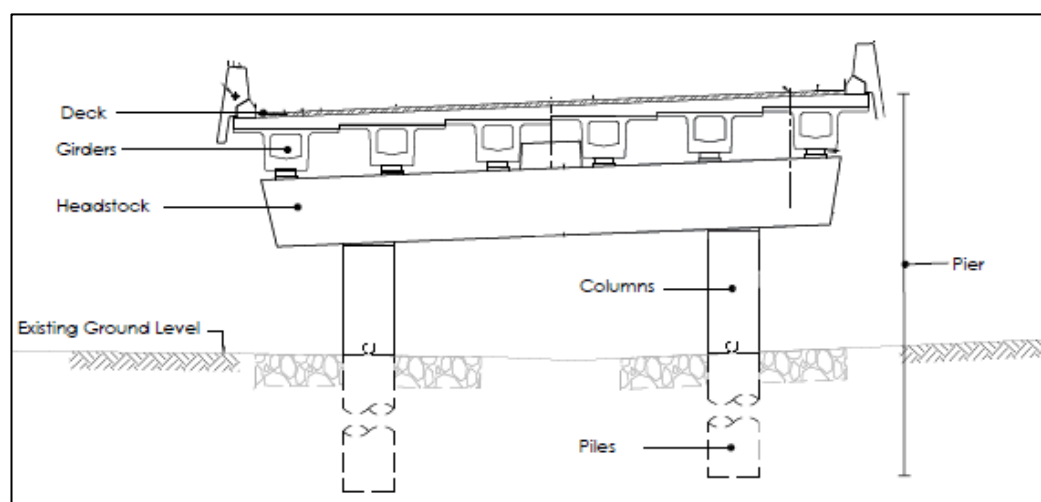
Work to build the main parts of these new bridges will start on Tuesday 28th November and will take about 14 months to complete, weather permitting. We have included a map to show the locations of this work.

Work to be carried out

Bridge work will involve:

- Pouring concrete to build the columns on top of the piles
- Installing precast headstocks (concrete piece placed on top of piles) and girders (concrete beams placed on top of headstocks)
- Pouring concrete for the bridge decks (concrete foundation of bridge pavement)
- Moving cranes and other equipment into the work area from the Pacific Highway.

We have provided a diagram to explain this work.



Example of new bridges being built

How will this affect you?

Managing noise

The project team will use machinery which may generate some noise to carry out this work. We will carry out noise monitoring throughout this work. We will also carry out noise mitigation to minimise impacts as much as possible by:

- Scheduling deliveries within normal work hours, wherever possible
- Turning off machinery when not in use
- Fitting equipment with devices to minimise noise
- Reducing the use of reverse beepers on light vehicles.

Traffic changes

Work will involve delivery of materials and equipment to the project sites. Access to the sites will be via the Pacific Highway for the bridge at James Creek and from Watt's Lane at Harwood Island.

There will be some temporary traffic changes while this work is carried out to ensure safety of road users. Reduced speed limits and lane closures may be in place and may affect travel times. Please keep to speed limits and follow the direction of traffic controllers and signs. For the latest traffic updates call 132 701, visit livetraffic.com or download the Live Traffic NSW App.

Work hours

Our normal work hours under the project's Conditions of Approval are:



7am – 6pm Monday – Friday
8am – 5pm Saturdays

Low noise impact activities which do not require the use of heavy vehicles or plant can also be carried out between 6am and 7am from Monday to Friday and between 8am and 5pm on Saturday. While the project team aims to work during these hours, some activities including concreting may need to be carried out at other times.

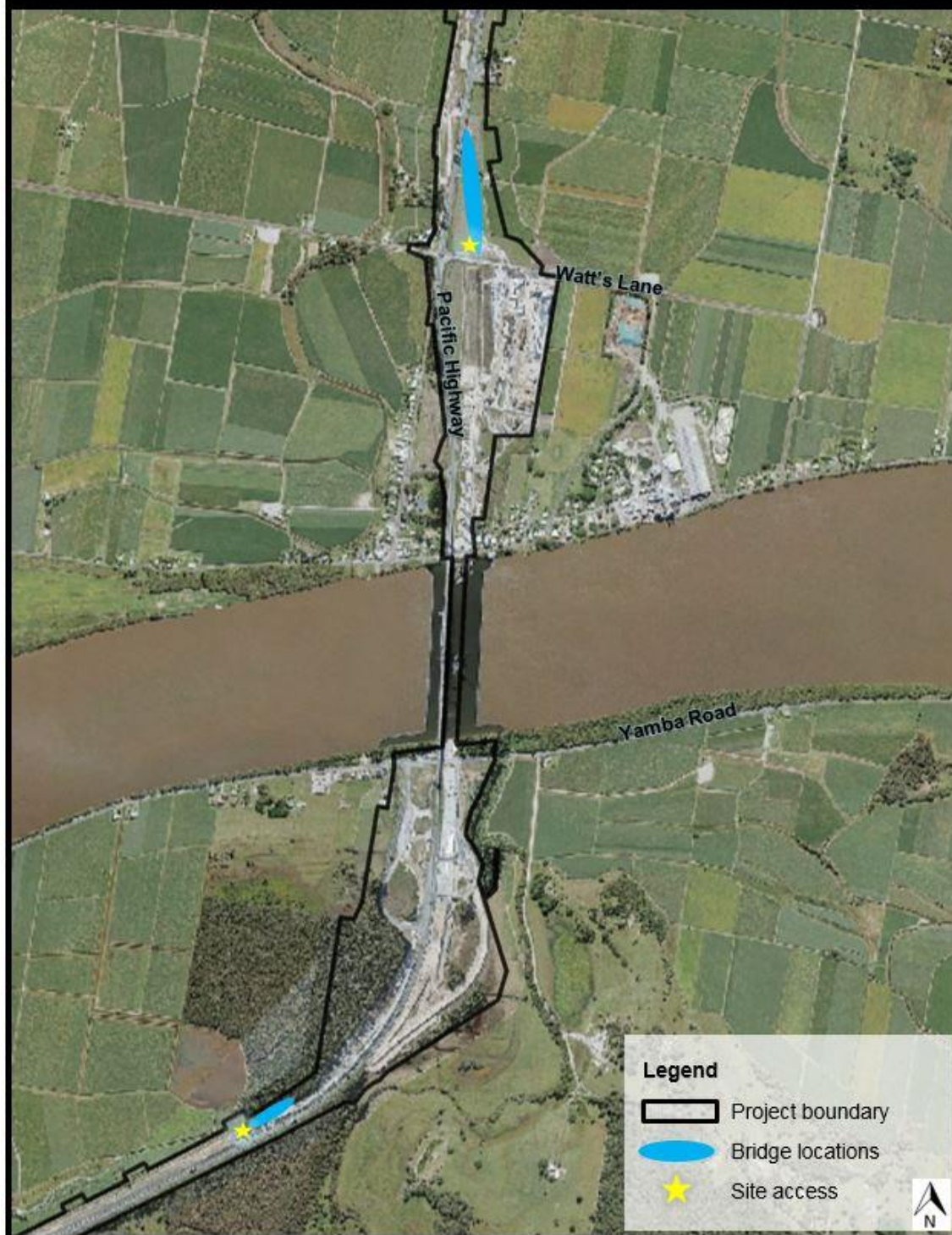
Directly affected residents will be notified in advance of any work the project team is doing outside of these hours.

Contact us

For more information about the work please contact the project team on 1800 778 900, email W2B@pacificcomplete.com.au or visit the project website at www.rms.nsw.gov.au/W2B.

We apologise for any inconvenience and thank you for your patience during this important work.

Map of bridge work locations at James Creek and Harwood Island



If you need help understanding this information, please contact the Translating and Interpreting Service on 131 450 and ask them to call us on 1800 778 900.