

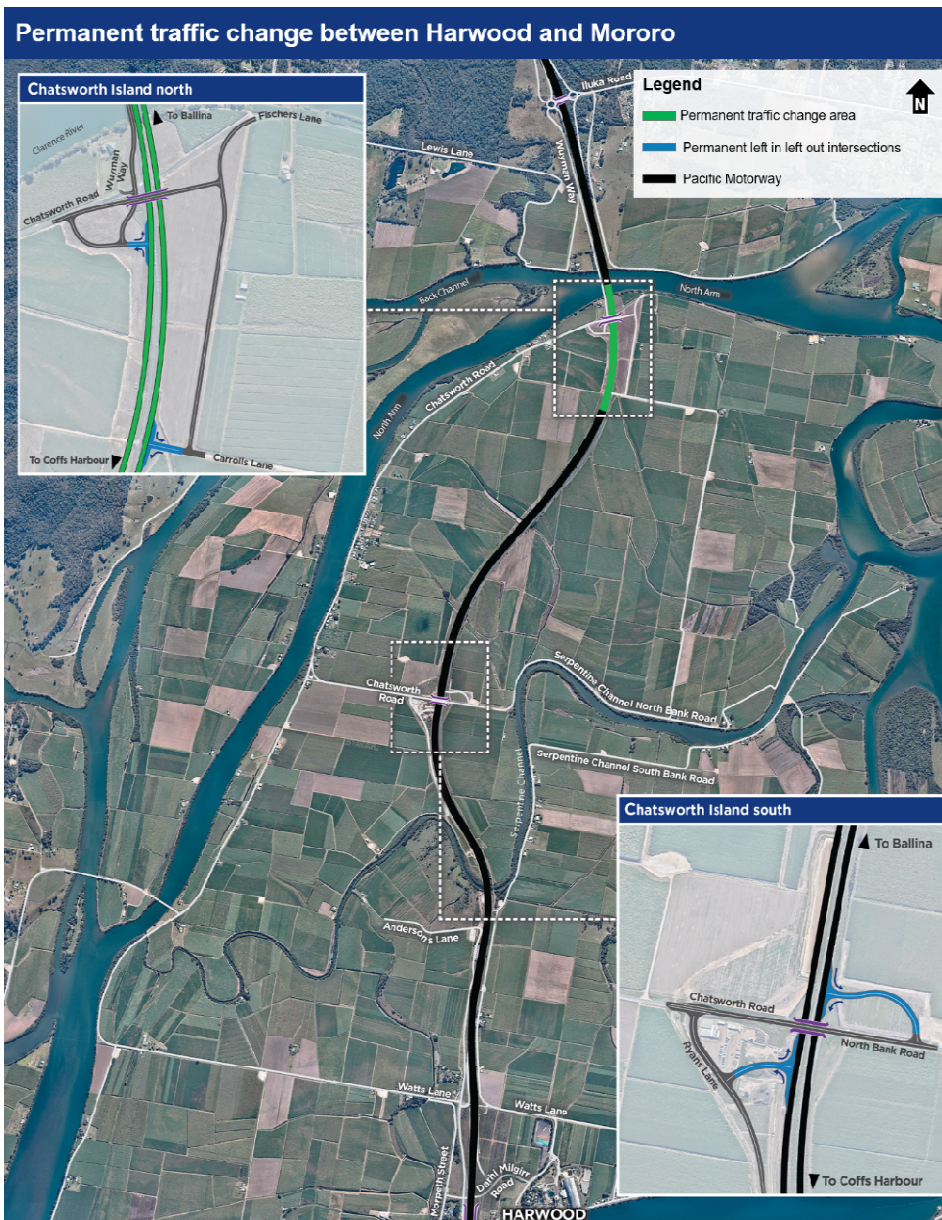


Permanent traffic change on the Pacific Motorway and Wuyman Way, Chatsworth Island

Transport for NSW, Pacific Complete and its contractor partners are working together to deliver the Woolgoolga to Ballina Pacific Highway upgrade.

As part of building the upgrade, traffic changes will be carried out on the Pacific Motorway and local roads at Chatsworth Island from late August, weather permitting.

This change will involve opening the permanent left in left out Wuywan Way and Pacific Motorway intersection, providing northbound access to north Chatsworth Island, Mororo and surrounding areas.



Wuyman Way is the newly named council road connecting Chatsworth Road to the Iluka interchange via the old Mororo Bridge.

At this time, the permanent left in left out arrangement for Carrolls Lane, Serpentine Channel North Bank Road and Ryans Lane intersections will be in place.

Motorists will be kept informed about dates for this traffic change through electronic message signs and on livetraffic.com.au.

How we manage our work

The project team will use machinery that generates noise, light and vibration. To manage this work, we will:

- turn off machinery when not in use
- locate equipment such as generators as far as possible from residences
- plan activities to minimise noise from reversing vehicles
- monitor noise so we can manage any potential impacts and adjust our work, as required

All work will be carried out in line with the project's Conditions of Approval and Construction Environmental Management Plan.


Work hours

Construction hours extended during Coronavirus outbreak

Monday to Sunday between 7am and 6pm

Public holidays between 7am and 6pm

*Additional out of hours work will continue to follow the existing approval and community notification process.










In areas where residents live more than 200 metres from the work, extended work hours are allowed between 6am and 7am and 6pm and 7pm from Monday to Friday.

Traffic changes

To manage queuing and safety, there will be some temporary traffic changes and lane closures that may affect travel time. Please obey speed limits and follow the direction of traffic controllers and signs. Motorists are encouraged to remember PAC – Plan, Awareness, Caution. For the latest traffic updates, you can call 132 701, visit livetraffic.com or download the Live Traffic NSW app.

We apologise for any inconvenience and thank you for your patience during this important work.

Subscribe now	For more information
We can keep you up to date about what's happening in your area or if you are interested in a specific topic. Register your interest:	 1800 778 900 (toll free)
 1800 778 900 (toll free)	 W2B@pacificcomplete.com.au
 W2B@pacificcomplete.com.au	 pacifichighway.nsw.gov.au
If you need help understanding this information, please contact the Translating and Interpreting Service on 131 450 and ask them to call us on 1800 778 900.	 Follow NSW Roads

 131 450