



Australian Government

BUILDING OUR FUTURE



July 2020

Temporary traffic change on the Pacific Highway and local roads between Harwood and Mororo

Transport for NSW, Pacific Complete and its contractor partners are working together to deliver the Woolgoolga to Ballina Pacific Highway upgrade.

As part of building the upgrade between Harwood and Mororo, there will be temporary traffic changes on the Pacific Highway and local roads. This work will take up to two weeks to complete, weather permitting.

Traffic will move onto the southbound carriageway in contraflow at Chatsworth Island between 6am and 6pm. This will allow work on the northbound carriageway to be carried out during the day. This work will include asphaltting, line marking, signage installation and traffic barrier removal.

From 6pm to 6am, traffic will move onto dual carriageway, one lane in each direction.

Local access to Chatsworth Island, Ashby and surrounding areas

Southbound local access will be maintained at all times via Serpentine Channel North Bank Road and Carrolls Lane.

Northbound local access will vary depending on the time of travel:

- 6am to 6pm use Serpentine Channel North Bank Road and Carrolls Lane
- 6pm to 6am use Ryans Lane

Alternative access is also available via the Iluka interchange using the old Mororo bridge and Wuyman Way.

Motorists will be kept informed about dates for this traffic change through electronic message signs and on livetraffic.com.au. Please drive to the conditions, and follow the directions of signs and traffic control.

We apologise for any inconvenience and thank you for your patience during this important work.

Work hours

Construction hours extended during Coronavirus outbreak

Monday to Sunday between 7am and 6pm

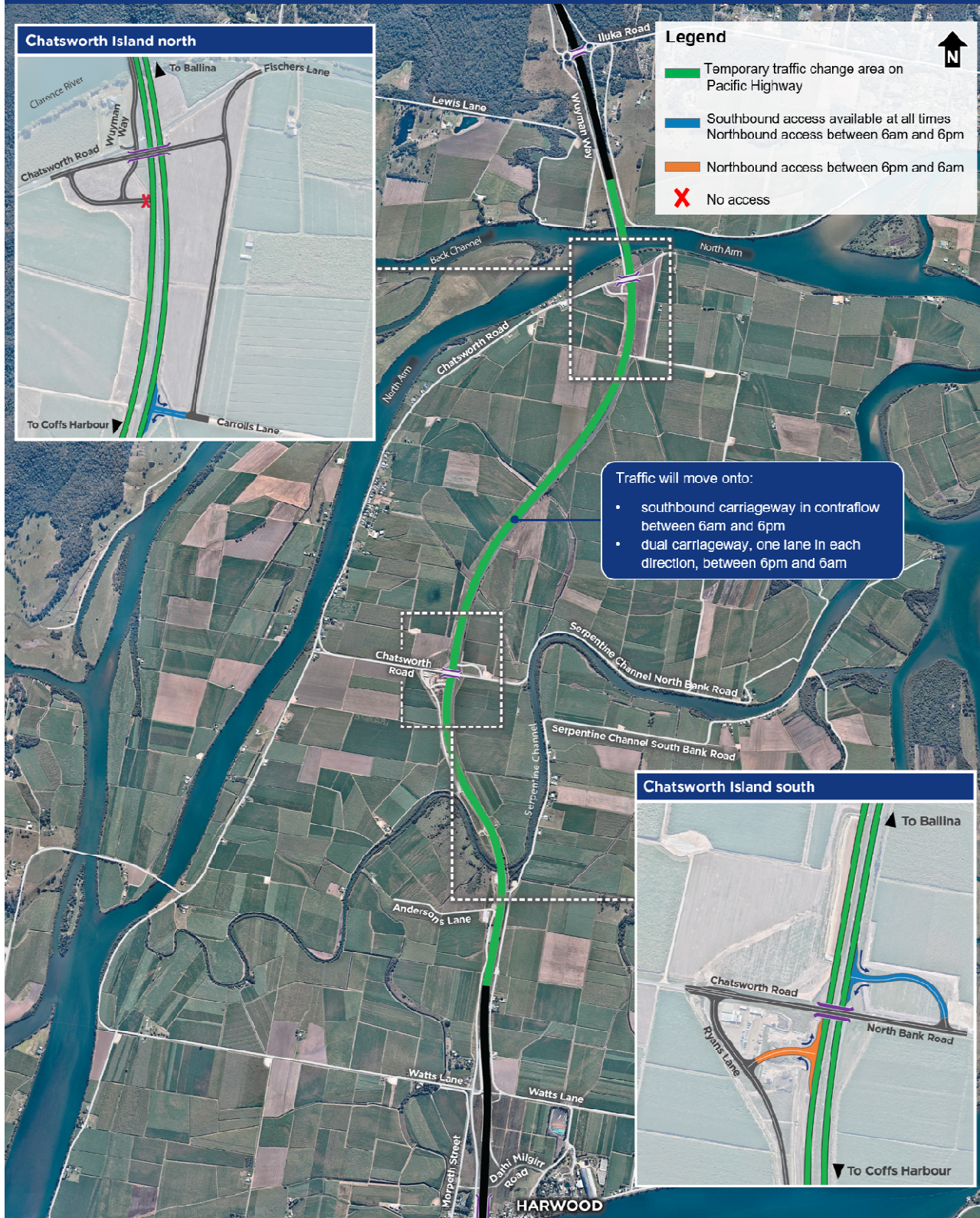
Public holidays between 7am and 6pm

*Additional out of hours work will continue to follow the existing approval and community notification process.



In areas where residents live more than 200 metres from the work, extended work hours are allowed between 6am and 7am and 6pm and 7pm from Monday to Friday.

Temporary traffic change between Harwood and Mororo



Subscribe now

We can keep you up to date about what's happening in your area or if you are interested in a specific topic. Register your interest:

☎ 1800 778 900 (toll free)

@ W2B@pacifichighway.com.au

For more information

☎ 1800 778 900 (toll free)

@ W2B@pacifichighway.com.au

🌐 pacifichighway.nsw.gov.au

📘 Follow NSW Roads

If you need help understanding this information, please contact the Translating and Interpreting Service on 131 450 and ask them to call us on 1800 778 900.

