

January 2018

Start of piling and bridge work near Woodburn and temporary traffic changes on Woodburn-Evans Road for the Woolgoolga to Ballina Pacific Highway upgrade

The Australian and NSW governments are jointly funding the \$4.36 billion Woolgoolga to Ballina Pacific Highway upgrade. Roads and Maritime Services' Pacific Highway Project Office, Pacific Complete and its contractor partners are working together to deliver the upgrade.

The Woolgoolga to Ballina project team is continuing main civil and bridge building work between Devils Pulpit and Broadwater.

Bridge building work

During 2017, the project team started main civil work and building two bridges and will now start work on a further four bridges between Tuckombil Canal and Woodburn-Evans Head Road. These four bridges near Woodburn will take about 11 months to complete, weather permitting. We have included a map to show bridge locations and staging of work.

What is involved for bridge work?

Piling work will include:

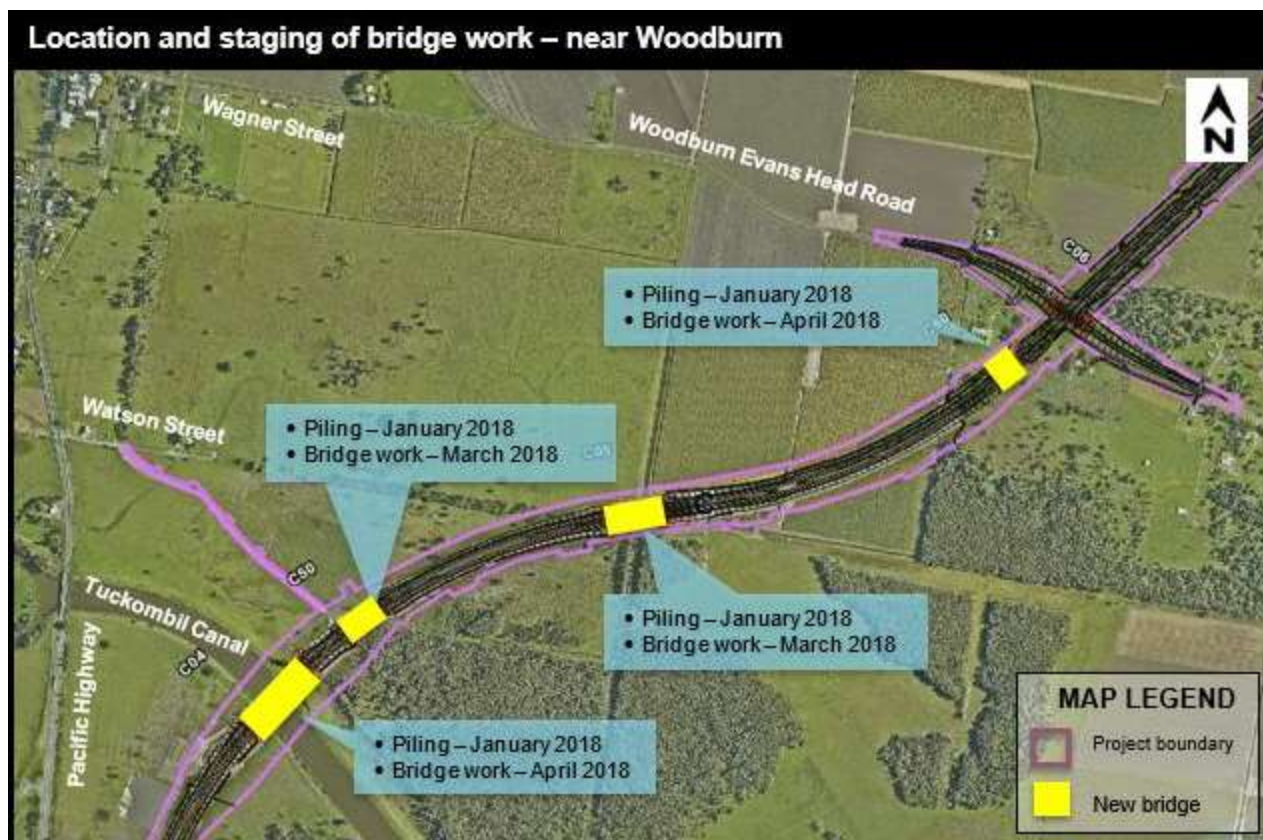
- Surveying and flagging work areas and installing environmental controls
- Setting up a site for storage of machinery and equipment
- Boring piles into the ground
- Pouring concrete to make the piles
- Finishing the pile cap including using jack hammering.

Building the bridges will include:

- Pouring concrete to build the columns on top of the piles
- Installing precast headstocks (concrete piece placed on top of piles)
- Installing precast concrete bridge decks (concrete foundation of bridge pavement).

How will this affect you?

Our work will be noisy at times and may cause some disturbance. Piling, in particular driven piling, can create increased noise and vibration levels and it is likely you will be able to hear these activities if they are near your property. We will carry out noise monitoring throughout this work. We will also carry out noise mitigation to minimise the impact of our work, where possible, including the use of respite periods.



Temporary traffic changes on Woodburn-Evans Head Road

The project team will haul fill material between construction sites on either side of Woodburn-Evans Head Road to build the new highway. Heavy vehicles will cross Woodburn-Evans Road between Norman Street and Golf Links Road, Woodburn for about 12 months.

This temporary traffic change will reduce heavy vehicle movements on the Pacific Highway and local roads minimising impacts for local residents and motorists.

How will this work affect you?

The project team will close Woodburn-Evans Head Road intermittently for short periods of time in both directions during construction hours for about 12 months. The delays are only expected to be about two minutes to allow trucks to cross. Traffic control will be in place to manage the temporary traffic changes.

Work hours

Typically work will be carried out during the project's approved construction hours which are:



In areas where residents live more than 200 metres from the work area, extended work hours are allowed between 6am and 7am and 6pm and 7pm from Monday to Friday. Nearby residents will be notified at least five working days in advance of any activities scheduled outside of these working hours.

Traffic management

There will be some temporary traffic changes while construction work is carried out on the Devils Pulpit to Broadwater section of the upgrade to ensure safety of road users and workers. Reduced speed limits and lane closures may be in place and may affect travel times. Please keep to speed limits and follow the direction of traffic controllers and signs. For the latest traffic updates call 132 701, visit livetraffic.com or download the Live Traffic NSW App.

For more information

If you have any questions, please contact the Woolgoolga to Ballina project toll free line on 1800 778 900 dial 1, W2B@pacificcomplete.com.au or visit the project website rms.nsw.gov.au/W2B.

We apologise for any inconvenience and thank you for your patience during this important work.



If you need help understanding this information, please contact the Translating and Interpreting Service on 131 450 and ask them to call us on 1800 778 900.