

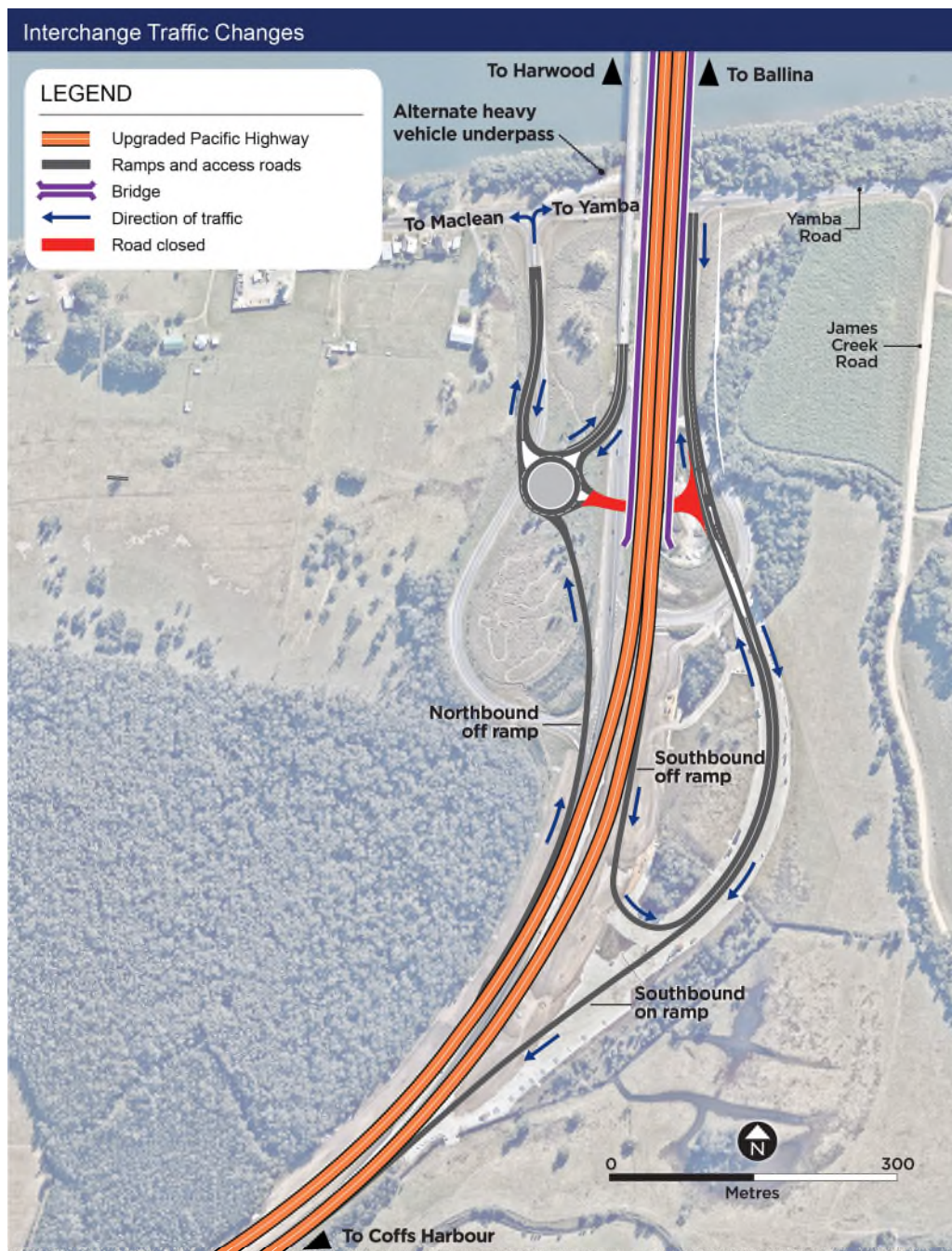


## Temporary traffic changes on the Yamba interchange

Transport for NSW, Pacific Complete and its contractor partners are working together to deliver the Woolgoolga to Ballina Pacific Highway upgrade.

As part of building the upgrade, there will be temporary traffic changes at the Yamba interchange, from mid-January, weather permitting.

At this time, the new heavy vehicle underpass will be temporarily closed for about six weeks while drainage work, removal of the old highway pavement and asphaltting is carried out.



In this temporary arrangement, vehicles higher than 4.1 metres must use the existing underpass between Yamba Road and the Clarence River. Northbound motorists travelling from areas such as James Creek, Palmers Island and Yamba will access the interchange by heading west on Yamba Road, travelling under the two bridges and turning left.

Motorists will be kept informed about dates for these changes through electronic message signs along the highway and local roads and [livetraffic.com.au](http://livetraffic.com.au).

### How we manage our work

The project team will use machinery that generates noise, light and vibration. To manage this work we will:

- turn-off machinery when not in use
- direct temporary lighting down and away from homes
- plan activities to minimise noise from reversing vehicles
- locate equipment such as generators as far as possible from residences

All work will be carried out in line with the project's Conditions of Approval and Construction Environmental Management Plan.

### Work hours

Typically work will be carried out during the project's approved construction hours, which are:








Approved construction hours	
Monday to Friday 7am–6pm	
Saturday 8am–5pm	

In areas where residents live more than 200 metres from the work, extended work hours are allowed between 6am and 7am and 6pm and 7pm from Monday to Friday. No work will be carried out on Sunday or a public holiday.

### Traffic changes

To manage queuing and safety, there will be some temporary traffic changes and lane closures that may affect travel times. Please keep to speed limits and follow the direction of traffic controllers and signs. Motorists are encouraged to remember PAC – Plan, Awareness, Caution. For the latest traffic updates, you can call 132 701, visit [livetraffic.com](http://livetraffic.com) or download the Live Traffic NSW app.

We apologise for any inconvenience and thank you for your patience during this important work.

Subscribe now	For more information
We can keep you up to date about what's happening in your area or if you are interested in a specific topic. Register your interest:	 1800 778 900 (toll free)
 1800 778 900 (toll free)	 <a href="mailto:W2B@pacificcomplete.com.au">W2B@pacificcomplete.com.au</a>
 <a href="mailto:W2B@pacificcomplete.com.au">W2B@pacificcomplete.com.au</a>	 <a href="http://pacifichighway.nsw.gov.au">pacifichighway.nsw.gov.au</a>
	 Follow NSW Roads
If you need help understanding this information, please contact the Translating and Interpreting Service on 131 450 and ask them to call us on 1800 778 900.	
 131 450	