

## Coffs Harbour bypass project

The Australian and NSW governments are funding the 14 kilometre Coffs Harbour bypass project. The bypass seeks to improve connectivity, road transport efficiency and safety for local and interstate motorists.

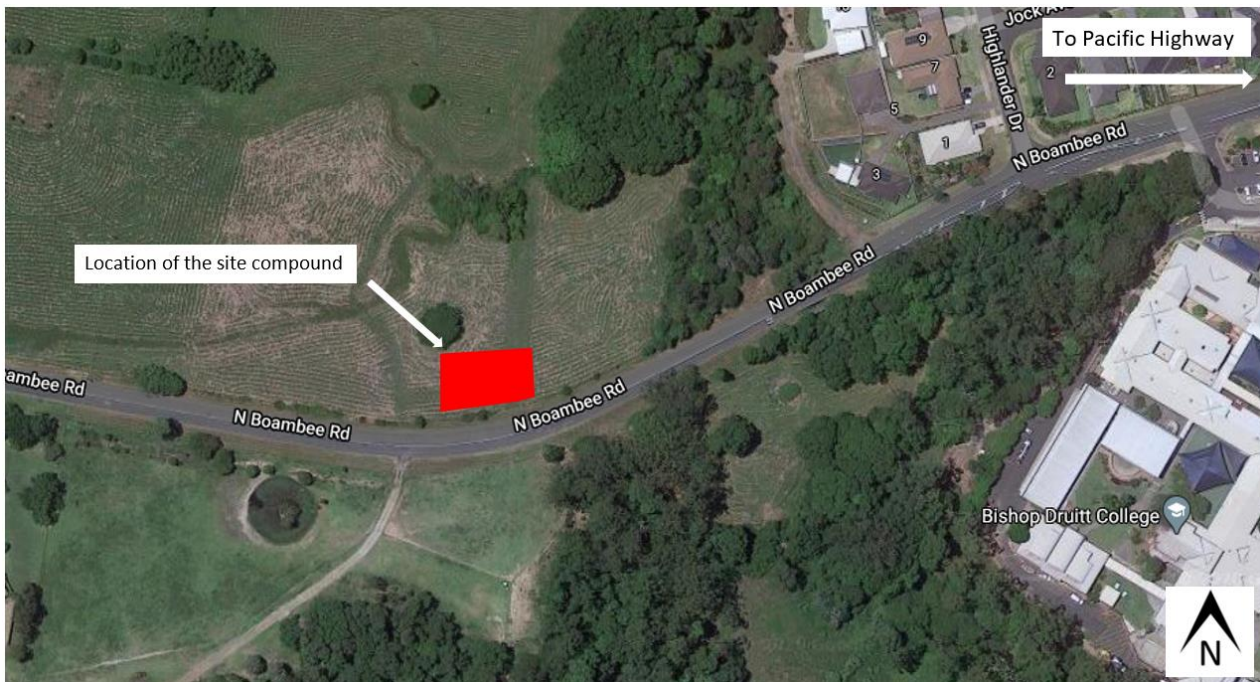
As part of early work for the Coffs Harbour bypass project, Transport for NSW will soon install a minor site compound and laydown area on North Boambee Road. The set-up of the compound will take place from 11 January 2021, weather permitting and will take up to two weeks.

While work is being carried out all efforts will be made to minimise disruption to the surrounding community and environmental impacts, such as dust and noise.

The minor site compound will operate between 7am and 6pm Monday to Friday and 8am and 1pm on Saturdays. The compound will be used for office accommodation, staff amenities (such as lunchrooms and toilets), light vehicle and plant parking, material, equipment and storage.

We will let you know in advance if we need to operate outside these times.

The location of the compound is shown below.



## Traffic changes

Please keep to speed limits and follow the direction of traffic controllers and signs. For the latest traffic updates, you can call 132 701, visit [livetraffic.com](http://livetraffic.com) or download the Live Traffic NSW App.

## Contact

If you have any questions, please contact the project team on 1800 550 621 or at [coffsharbourbypass@transport.nsw.gov.au](mailto:coffsharbourbypass@transport.nsw.gov.au)

Thank you for your patience during this important work.



If you need help understanding this information, please contact the Translating and Interpreting Service on 131 450 and ask them to call us on 1800 550 621