

March 2017

## **Woolgoolga to Ballina Pacific Highway upgrade - early work for the bridge over Richmond River at Broadwater**

**The Australian and NSW governments are jointly funding the \$4.36 billion Woolgoolga to Ballina Pacific Highway upgrade. Roads and Maritime Services Pacific Highway Office and Pacific Complete are working together to deliver the project. As part of the project, early work is starting for the new bridge over Richmond River at Broadwater.**

The Woolgoolga to Ballina project team is building a new bridge over the Richmond River and the existing Pacific Highway, approximately 0.5 kilometres north of the township of Broadwater.

From Monday 3 April 2017, early investigation work will start to gain important information for the design of the new bridge.

This work includes survey activity on the northern and southern banks of the Richmond River. Survey pegs will be installed to confirm project boundaries and identify control points. Survey work is expected to take approximately two weeks.

From Wednesday 19 April 2017, geotechnical investigation work will also start to gain detailed information about ground and river conditions. This work involves drilling boreholes along the route of the new bridge. See map overleaf for further information on the work area.

Three drilling rigs will be used during work. Two land base drilling rigs will be mobilized: one mounted on truck and the other on an excavator. A third drilling rig will be operated from a barge on the Richmond River. The barge will transport the drilling rig, which will be used to drill boreholes and collect samples from within the river.

This early investigation work is expected to be completed by the end of June 2017.

### **How will work affect you?**

Temporary traffic control may be in place adjacent to the Pacific Highway during nearby work. Access to properties will be maintained at all times. Motorists are advised to follow all signs and drive to the conditions of the road.

A channel will remain opened at all times for marine users. Marine operators are advised to use care navigating near the work and reduce speed to four knots when within 100 metres of the work area.

Strict environmental controls will be in place while work is carried out. Minimal noise and vibration impacts are expected during work.

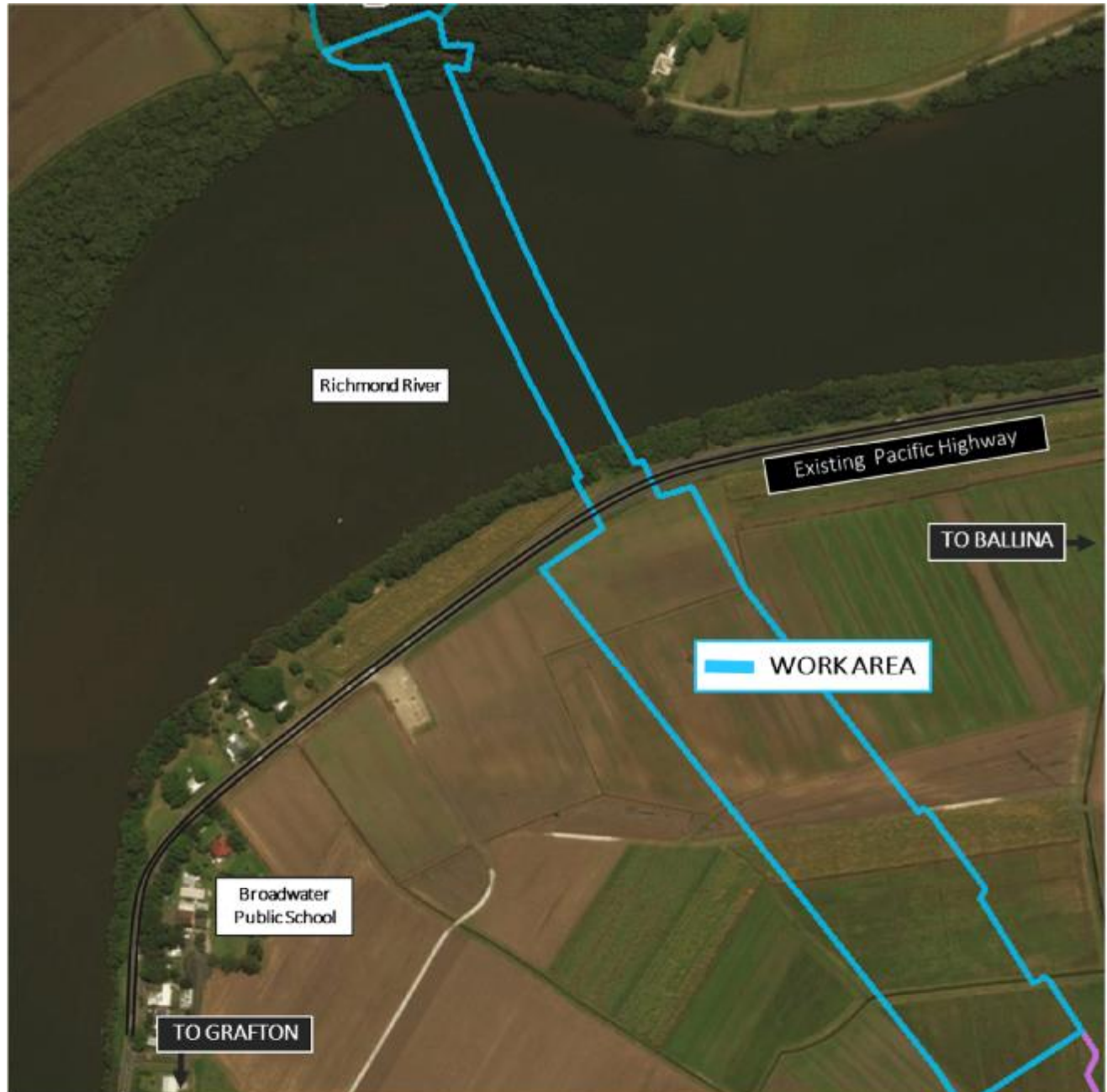
---

Work will be carried out during the project's approved working hours from 7am to 6pm on weekdays and on Saturdays from 8am to 1pm. We will notify you in advance if we need to do any work outside these times.

### For more information

If you have any questions, please call the Woolgoolga to Ballina project toll free line 1800 778 900 dial 1, email [W2B@pacificcomplete.com.au](mailto:W2B@pacificcomplete.com.au) or visit the project website [www.rms.nsw.gov.au/W2B](http://www.rms.nsw.gov.au/W2B)

### Map of work area



If you need help understanding this information, please contact the Translating and Interpreting Service on 131 450 and ask them to call us on 1800 778 900.