



Australian Government

BUILDING OUR FUTURE



May 2017

Start of work – compound site at Broadwater for Devils Pulpit to Richmond River

The Australian and NSW governments are jointly funding the \$4.36 billion Woolgoolga to Ballina Pacific Highway upgrade. Roads and Maritime Services Pacific Highway Office and Pacific Complete are working together to deliver the project.

The Woolgoolga to Ballina project team will establish a number of compound sites along the 155 kilometre route for the upgrade. These compounds will have different functions and we will be working at these sites throughout the project's delivery.

In September 2016 the project team asked for feedback on building and working at the compound site, which is located west of Broadwater – Evans Head Road, Broadwater. We also met with landowners and distributed a summary of feedback to the community in December 2016.

We have included a map to show the location of the site.

We will start work to build the compound from the end of May and this will take about three months, weather permitting. The site compound will be operational for about three years and it will be rehabilitated after the project is complete, in line with the project's Conditions of Approval.

Work to be carried out

While the compound is being built we will store temporary offices on part of the site. Establishing the compound site will involve building:

- Temporary offices and amenities
- Parking areas for staff and trucks
- Storage for equipment and materials
- Workshops for repairing and maintaining machinery and equipment.

Concrete batch plant update

The project team appreciated the feedback it received through the consultation process on the proposed operation of a concrete batch plant at the compound site in Broadwater.

We have decided not to build the batch plant for the initial phase of construction. Concrete for this work will be provided from an off-site location and will be transported to the site via trucks.

A batch plant will be needed at this location as part of the later phase of building due to the requirement for concrete operations to be in close proximity to the work. We are planning to operate the batch plant from early-2018 and demobilisation to finish in late-2019.

How this work will affect you

Key activities at various stages in the project will include at:

- Establishment – work includes installing environmental controls, minor vegetation clearing, constructing the compound and associated carpark, operating plant and equipment
- Operation – work includes developing a staff worksite, site parking, material equipment and storage, operating a workshop for servicing plant and machinery
- Demobilisation – work includes removing buildings and car parks, and carrying out landscaping and rehabilitation work.

To manage the increase in project vehicles in the area, where possible, we will upgrade Broadwater – Evans Head Road to include appropriate turning lanes and reduce the speed limit.

Work hours

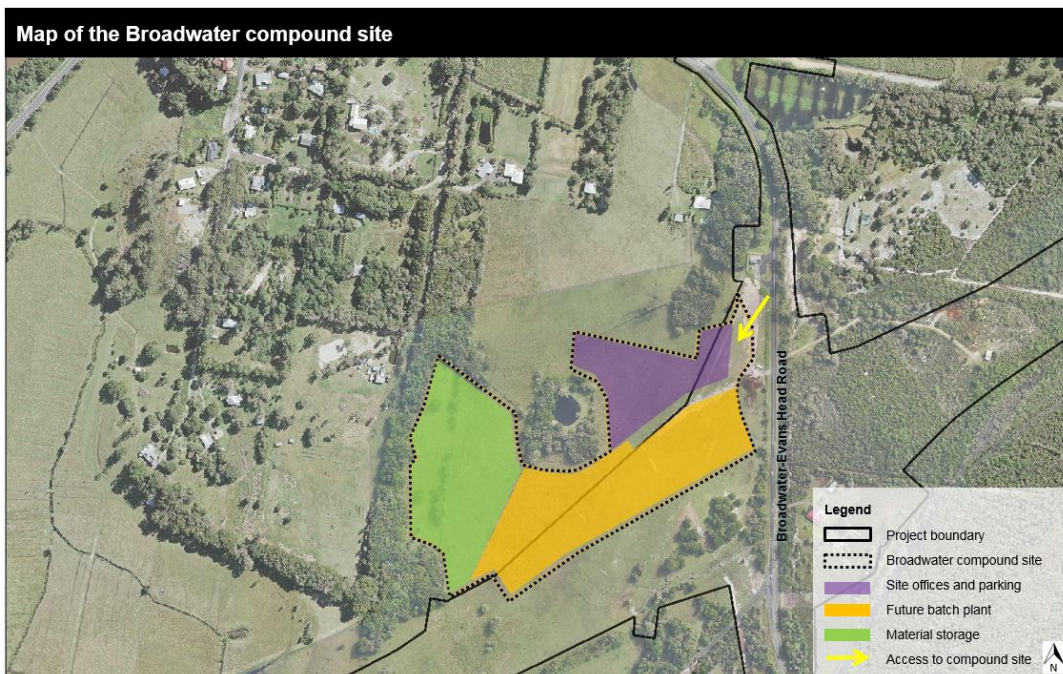
Typically work will be carried out from Monday to Friday between 7am and 6pm. We will also work on Saturday between 8am and 5pm if required. Low noise impact activities which do not require heavy vehicles or plant may be carried out from Monday to Friday between 6am and 7am and 6pm and 7pm.

Please keep to speed limits and follow the direction of traffic controllers and signs. For the latest traffic updates call 132 701, visit livetraffic.com or download the Live Traffic NSW App.

For more information

If you have any questions, please contact the Woolgoolga to Ballina project toll free line on 1800 778 900 dial 1, W2B@pacificcomplete.com.au or visit the project website rms.nsw.gov.au/W2B.

We apologise for any inconvenience and thank you for your patience during this important work.



If you need help understanding this information, please contact the Translating and Interpreting Service on 131 450 and ask them to call us on 1800 778 900.