

June 2018

Update on piling and bridge work between Maclean and Mororo for the Woolgoolga to Ballina Pacific Highway upgrade

The Australian and NSW governments are jointly funding the Woolgoolga to Ballina Pacific Highway upgrade. Roads and Maritime Services' Pacific Highway Project Office, Pacific Complete and its contractor partners are working together to deliver the upgrade.

The Woolgoolga to Ballina project team is building 24 bridges between Maclean and Mororo including the new bridge over the Clarence River at Harwood. The project team has started work on 14 of these bridges and will start on another five during the next six months. We have included a map to show bridge locations and staging of work.

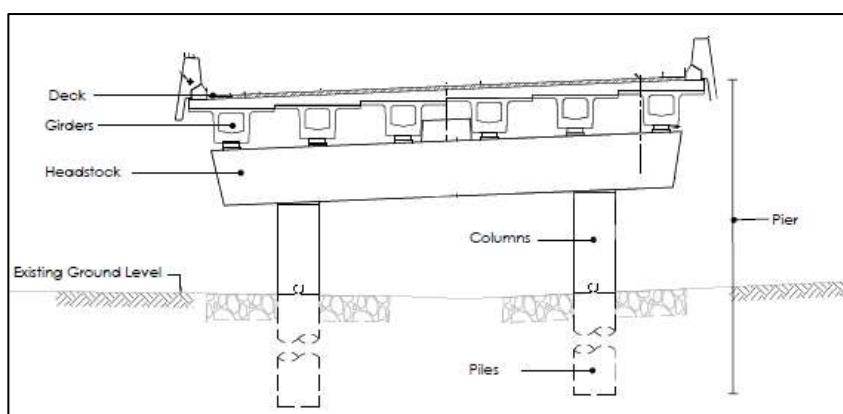
What is involved?

Piling will include:

- Surveying and flagging work areas and installing environmental controls
- Setting up a site for storage of machinery and equipment
- Building piles:
 - *Driven piles*: hammering or vibrating steel tubes into the ground
 - *Bored piles*: drilling a circular auger into the ground and installing reinforced steel
- Pouring concrete to make piles and trimming the pile tops with a jack hammer.

Building bridges will include:

- Pouring concrete to build the columns on top of the piles
- Installing headstocks (concrete piece placed on top of columns) and girders (concrete beams placed on top of headstocks)
- Installing concrete bridge decks (concrete foundation of bridge pavement).
- Completing earthwork for the bridge abutments and installing protection to minimise scouring.



Example of the components for bridge construction

How will this affect you?

Our work will be noisy at times and may cause some disturbance. Piling, in particular driven piling, can create increased noise and vibration levels as a result of hammering like activity. It is likely you will be able to hear these activities if they are near your property. Bored piling is generally considered less impact as no hammering activity used. We will carry out noise monitoring throughout this work. We will also carry out noise mitigation to minimise the impact of our work, where possible, including the use of respite periods.

Some bridges need to be built in two stages for a number of construction reason. For example, to reduce impact to traffic on the Pacific Highway, to accommodate soft soils and also available access to the area. This means that the project team will complete stage one of piling and bridge work and return to complete stage two piling and bridge work at a later date. Affected residents will be notified when piling will recommence in your area.

Work hours

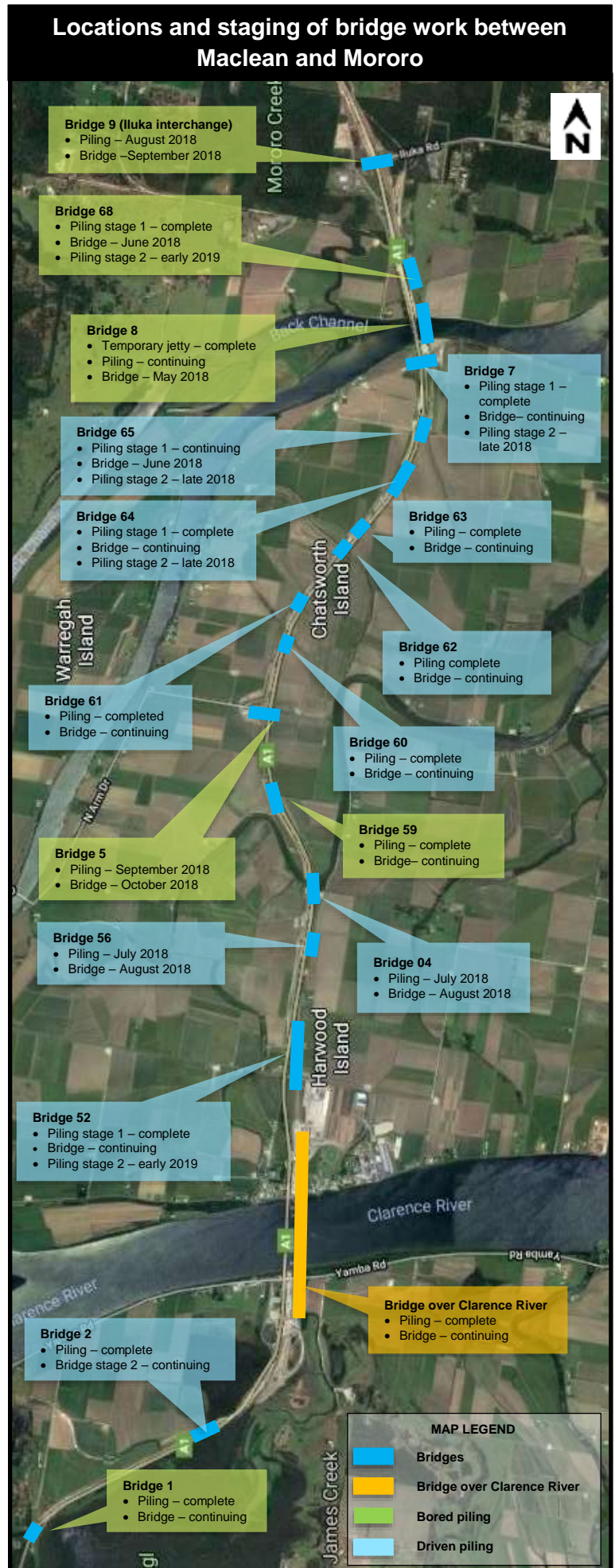
Typically work will be carried out during the project's approved construction hours which are:



In areas where residents live more than 200 metres from the work area, extended work hours are allowed between 6am and 7am and 6pm and 7pm from Monday to Friday.

Construction hours for driven piling are from 8am to 5pm between Monday and Friday and from 8am to 1pm on Saturday.

Additionally, work outside or normal construction hours is also allowed where the impacts to residents are predicted to be low, including no greater increase in noise levels than 5 decibels over the existing background noise level.



Out of normal construction hours work

The project team is also doing work outside of normal construction hours for technical reasons. The team would like to do these extended hours of work from June to December 2018. Reasons to do this work outside of our normal hours include:

- **Safety** – making it safer for motorists and workers when we are building near roads and water ways by reducing interaction between these two groups.
- **Weather** – wind conditions affect when building can be done over the land and water. Building over the water also means the work is affected by the tidal movements.
- **Quality** – when pouring concrete, it must be done in a single pour to ensure quality and integrity of the concrete as it cures. In instances where machinery breaks down, inclement weather interrupts work or deliveries of concrete are delayed, additional hours will allow for a continuous concrete pour and better quality outcomes.

How will the out of normal hours work affect you?

We will contact residents as required to confirm the timing of the activity before starting out of hours work. Some of these activities will include using machinery which may generate some noise, however, we will minimise impacts by:

- Directing temporary lighting required down and away from homes
- Planning activities close to residents to coincide with normal working hours where possible
- Turning off machinery when not in use
- Fitting equipment with devices to minimise noise monitoring noise.
- Monitoring noise so we can manage any potential impacts and adjust the work activity as required.

What out of normal construction hour work will we do?

Location	Activity	Why	Hours	Occurrence	Impacts
All bridges (Blue in map)	Concrete activities including steel and form work, delivery, pouring and monitoring for columns, headstocks and decks	Quality	Monday to Friday from 4am to 7am and from 6pm to 10pm Saturday from 4am to 8am and 5pm to 7pm	Daily as required for concrete work	Light Traffic Noise (low/medium)
All bridges (Blue in map)	Monitoring concrete during the curing process	Quality	Sunday from 6am to 7pm	Daily as required for concrete curing process	Noise (low)
All bridges (Blue in map)	Crane lifts	Safety Weather	Monday to Friday 5am to 7am Saturday from 5am to 8am	As allowed by weather conditions	Navigational restrictions Lighting Noise (low)
Bridge over the Clarence River – (Orange in map)	Crane lifts and installing concrete pieces within the project boundary	Safety Weather	Monday to Friday from 5am to 7am and from 6pm to 7pm Saturday from 5am to 8am	As allowed by weather conditions	Light Traffic Noise (low/medium)

Temporary Jetty

A temporary jetty has been built to help with construction of the new bridge over the Clarence River North Arm at Mororo. The temporary jetty will be in place for approximately 10 months until the new permanent bridge is completed.

The temporary bridge was chosen to be built instead of using barges as it is safer and allows for faster construction as multiple bridge building activities can be carried out at the same time over the water.

Traffic changes

Work will involve delivery of materials and equipment to the project sites. Access to the work areas will be from the Pacific Highway, Ryans Lane, Chatsworth Road, Fishers Lane, Watts Lane, Farlows Lane and Andersons Lane. Please contact the project team if you would like to receive weekly email updates on delivery locations.

There will be some temporary traffic changes while this work is carried out to ensure safety of road users and workers. Reduced speed limits and lane closures may be in place and may affect travel times. Please keep to speed limits and follow the direction of traffic controllers and signs. For the latest traffic updates call 132 701, visit livetraffic.com or download the Live Traffic NSW App.

Next steps

As this work is ongoing, there is potential for future out of hours' activities that are not detailed in this notification. The project team will contact affected residents if additional work is required.

For more information

If you have any questions, please contact the Woolgoolga to Ballina project toll free line on 1800 778 900 dial 1, W2B@pacificcomplete.com.au or visit the project website rms.nsw.gov.au/W2B. We apologise for any inconvenience and thank you for your patience during this important work.

We apologise for any inconvenience and thank you for your patience during this important work.



Temporary jetty over the Clarence River North Arm, near Mororo bridge, April 2018.



Constructing the bridge deck at Bridge 52 North of Watts Lane, Harwood Island, April 2018. Bridge 52 will be 380 metres in length when completed.



If you need help understanding this information, please contact the Translating and Interpreting Service on 131 450 and ask them to call us on 1800 778 900.