



Australian Government

BUILDING OUR FUTURE



October 2016

Building and working at the Wardell Road site compound, Lumleys Hill batch plant and borrow site.

The Australian and NSW governments are jointly funding the \$4.36 billion Woolgoolga to Ballina Pacific Highway upgrade. As part of the project, we are seeking your feedback on building and working at a site compound at Wardell Road, and at a batch plant and borrow site at Lumleys Hill.

To build the Woolgoolga to Ballina upgrade, we will be establishing batch plants and site compounds along the 155 kilometre route. These site compounds will have different functions and will support the building of the road upgrade. We will be working at these sites throughout the project's development.

We are proposing to establish a compound, concrete batch plant and earthworks borrow site at a location within the project boundary accessed via Wardell Road and Hillside Lane. This site was assessed as part of the Environmental Impact Statement (EIS) in 2012 and the 2013 Submissions/Preferred Infrastructure Report (SPIR) and is as highlighted on the included map. If approved, we expect to start building at this site in February 2017, with the compound operational by April 2017. The site is proposed to be operational for about three years and will be rehabilitated after completion, in line with the project's conditions of approval.

Site compound and batch plant

The site compound and batch plant involves building:

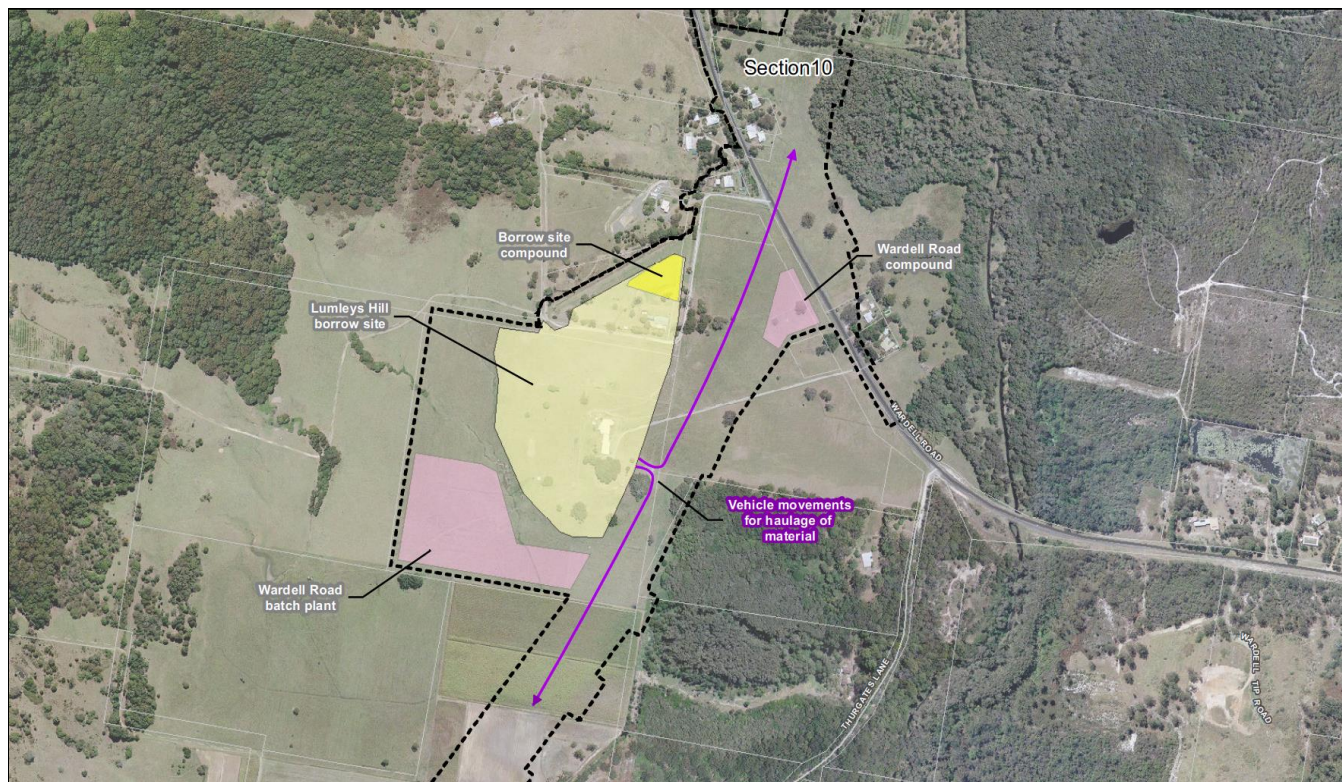
- Temporary offices with amenities for staff
- Staff car park
- Truck parking area
- Storage and stockpiling areas for equipment and materials
- Batch plant for making concrete

What to expect

Key activities:

- Establishment – installing environmental controls, minor vegetation clearing, constructing the compound and associated carpark, operating plant and equipment
- Operation – staff parking, operational machinery, material and equipment storage, stockpiling, delivery of materials, batching concrete, transporting concrete for use on the highway
- Demobilisation – removing buildings, car park and stockpiles, reinstating the area, landscaping and rehabilitation.

Proposed Wardell Road compound, batch plant and borrow site



Borrow site

We are proposing to use Lumleys Hill borrow site, located next to the project route within the project boundary, to provide materials to build the new alignment. This would reduce travel distances and the number of trucks on the existing highway and local roads, improving safety and efficiency for all road users.

It is proposed to remove about 750,000 cubic meters of material. This will be transported within the project boundary directly from the site.

To prepare for work we propose to:

- Remove isolated pockets of vegetation
- Establish site access
- Install environmental controls and site security, including fencing
- Install offices and staff amenities
- Install plant and equipment.

Operational activities would involve:

- Operating machines and equipment within the site
- Excavating
- Crushing and screening material
- Stockpiling material
- Hauling extracted material from the site along the construction corridor

How will the work affect you?

Excavation will be used to extract the material from Lumleys Hill. Controlled rock blasting may be used at the site. We will manage any noise and dust ensuring minimal impact to the community. This includes using mitigation measures like water sprays to increase the moisture content of the material, making sure equipment is serviced and maintained, placing stockpiled materials in mounds to help reduce noise as well as conducting noise monitoring in accordance with the projects approved noise management plan.

Koala management measures

As part of the project's conditions of approval, we will implement measures outlined in the Koala Management Plan, including:

- We will install temporary fencing around the site compound, batch plant and borrow site to prevent koalas entering the work area
- Speed limits on local roads will be temporarily reduced
- All workers will be inducted and trained in koala awareness and management
- Koala awareness signs will be placed on Wardell Road and within the alignment
- Predator control activities targeting wild dogs, foxes and cats
- An ecologist with suitable experience in koala handling will be available during pre-clearing surveys, clearing activities and throughout the work.

Construction traffic

Workers will use Wardell Road to access the site. As the project progresses vehicles will also travel along the construction corridor. There will be up to 300 heavy vehicle movements and up to 100 light vehicle movements per day at peak on Wardell Road for the project.



300
expected total
truck movements*



100
expected total staff car
and ute movements*

* Expected vehicle movements (one vehicle travelling in and out of the site is two movements)

Work hours



7am – 6pm Monday – Friday
8am – 5pm Saturdays

In areas where residents live more than 200 metres from the project boundary, extended work hours from 6am to 7pm weekdays may be permitted. We will notify nearby residents at least five working days in advance of any activities scheduled outside of these working hours.

How is noise and vibration managed?

There will be some noise when we are building and working at this site. To manage the impact of noise we will wherever possible:

- Establish site entry and exit points away from residential properties
- Service and maintain plant and equipment so they are in good working order
- Where practicable noise generating plant and equipment will be directed away from residential properties
- Only schedule high noise activities:
 - 8am to 5pm Monday to Friday
 - Saturdays between 8am and 1pm
 - for no longer than three hours at a time with a minimum respite time of one hour between blocks of work.
- Minimise the number of plant and equipment operating at the same time
- Monitor noise
- Use natural features and site structures to provide noise shielding.

How is traffic managed?

To manage the increase in project vehicles in the area we will wherever possible:

- Use the construction corridor for heavy vehicle movements
- Reduce the speed limit on Wardell Road at site access points for the duration of the work
- Maintain the condition of Wardell Road for the duration of the project

Next steps

We are carrying out an assessment of the proposed compound, batch plant site and borrow site against the requirements of our project approval. As part of this process we are seeking your feedback on the use of the site. You can attend a 'drop-in' session and/or use the feedback form attached to give us your feedback.

'Drop-in' session

A 'drop-in' session is being held at Wardell Hall, 49 Richmond St, Wardell. If you wish to:

- speak with the project team to find out more about the compound, batch plant and borrow site
- share information on wild dog or feral animal movements in the area, or register for access to your property for predator control work

please 'drop-in' **any time between 3pm and 7pm on Wednesday, 02 November 2016.**

Please fill in the feedback form attached and return it to us by **18th November 2016.**

You can return it by:

Email: W2B@pacificcomplete.com.au

Post: Please use the supplied reply paid envelope.

Alternatively, you can provide your feedback over the phone by calling **1800 778 900.**

What happens once I provide feedback?

Your feedback will help Roads and Maritime reduce the impacts of work on the community. The project team will consider your feedback and prepare responses in our assessment. You will be provided with information about the way we plan to reduce the impacts based on your feedback.

For more information

For more information about the project, please contact us on 1800 778 900, email W2B@pacificcomplete.com.au or visit the project website at www.rms.nsw.gov.au/W2B



If you need help understanding this information, please contact the Translating and Interpreting Service on 131 450 and ask them to call us on 1800 778 900.

Feedback form

Woolgoolga to Ballina batch plant site and compound site at Wardell Road

We are seeking your feedback on the proposed compound site, batch plant and borrow site at Wardell Road.

Your feedback will help us manage any specific concerns you may have during the building and operation of the compound site.

Please complete the form below and return it to us by:

Email: W2B@pacificcomplete.com.au

Post: Please use the supplied reply paid envelope or mail to Communications, PO Box 546, Grafton NSW 2460.

Name:	
Address	
Phone:	
Email:	
Signature	
Date	

Do you have any objections or comments on the proposed use of:

- A compound site at Wardell Road?

Yes (if yes, please outline your comments below)

No

- A batch plant at Wardell Road?

Yes (if yes, please outline your comments below)

No

Feedback form

Woolgoolga to Ballina batch plant site and compound site at Wardell Road

- A borrow site at Lumleys Hill?

Yes (if yes, please outline your comments below)

No

Would you like the project team to contact you to discuss your feedback?

Yes

No

Key issues raised will be included in the sites assessment. If you require further information, please contact the community team on 1800 778 900 (press 1) or email W2B@pacificcomplete.com.au

Thank you.