

Korora Hill Interchange



Australian Government



Artist impression of the Korora Hill Interchange looking north

Key features:

- The Korora Hill Interchange connects to Bruxner Park Road, Solitary Islands Way, James Small Drive and the existing Pacific Highway
- The interchange features two visually prominent bridges
- Planting and structures will be used to promote the interchange as a gateway to Coffs Harbour and the resorts district, while also screening the residential precincts.

Coffs Harbour Bypass

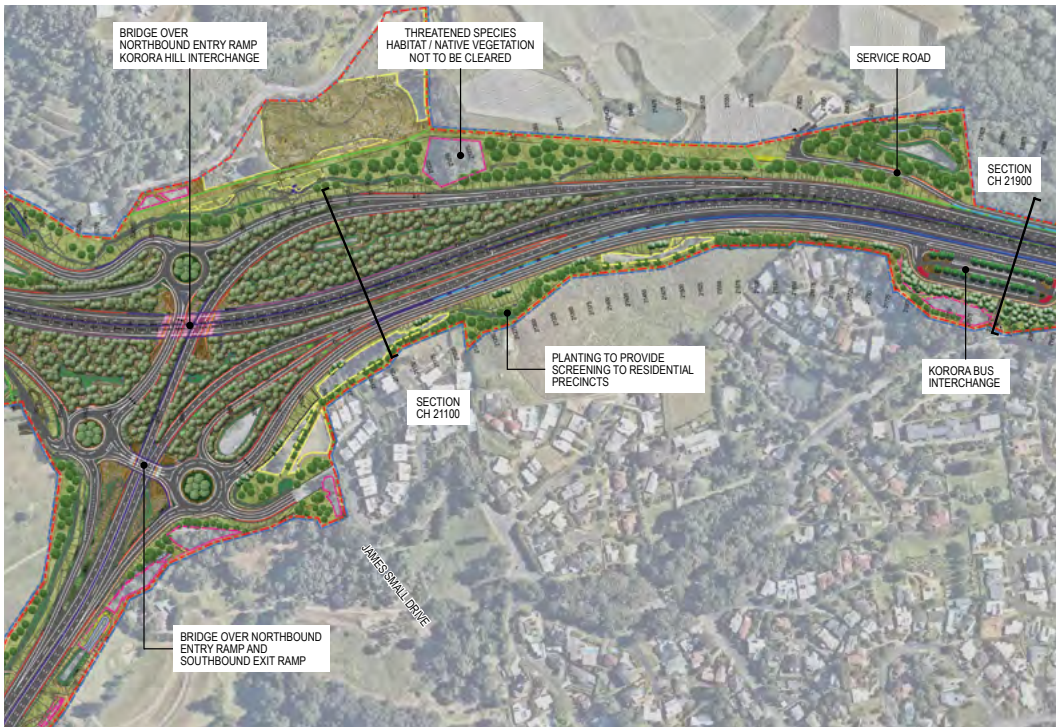


Artist impression of the Korora Hill Interchange from above



Artist impression of the Korora Hill Interchange – view from the northbound lanes

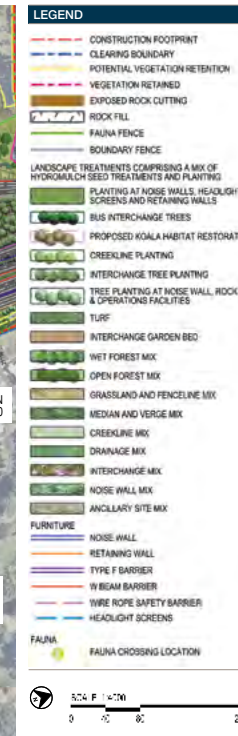
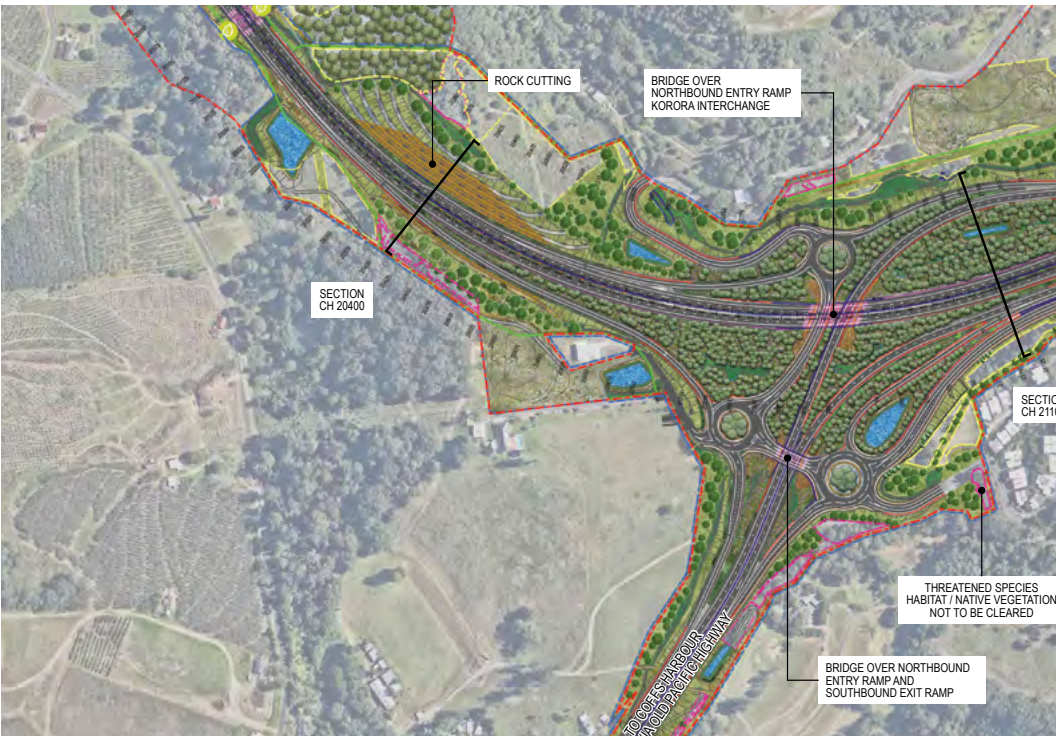
Urban design concept plan – Korora Hill Interchange north



SERVICE ROAD	ANCILLARY SEEDING	OPEN FOREST SEEDING	GRASSLAND SEEDING
NORTHBOUND	INTERCHANGE SEEDING AND TREE PLANTING	OPEN FOREST SEEDING	OPEN FOREST SEEDING
MEDIAN	INTERCHANGE SEEDING AND TREE PLANTING	OPEN FOREST SEEDING	MEDIAN SEEDING
SOUTHBOUND	INTERCHANGE SEEDING AND TREE PLANTING	OPEN FOREST SEEDING	OPEN FOREST SEEDING

CONCEPT PLAN - 13 of 15

Urban design concept plan – Korora Hill Interchange south



NORTHBOUND	OPEN FOREST SEEDING	ANCILLARY SEEDING
MEDIAN	MEDIAN SEEDING / INTERCHANGE SEEDING AND TREE PLANTING	ANCILLARY SEEDING
SOUTHBOUND	OPEN FOREST SEEDING	OPEN FOREST SEEDING

CONCEPT PLAN - 12 of 15

