



May 2023

# Barrier installation and vegetation removal on the Pacific Highway for the Coffs Harbour bypass

The Australian and NSW governments are funding the \$2.2 billion, 14-kilometre Coffs Harbour bypass project. The bypass will boost the regional economy and improve connectivity, road transport efficiency and safety for local and interstate motorists.

As part of major construction work, the Coffs Harbour bypass project team is installing concrete barriers and signs, and removing vegetation along the Pacific Highway between Sawtell Interchange and Englands Road in preparation for drainage and earthworks.

## Installing barriers and signage

The project team is installing barriers and signage along the northbound lane of the Pacific Highway from Lindsay Transport to Englands Road, and along Englands Road and Isles Drive. This work will be carried out for **five nights** between **15 May and 19 May 2023**, if rain interrupts, it will be completed between **22 May and 26 May 2023**. This work will be done at night between **7pm and 6am** because of lower traffic volumes on the highway making it safer for the project's workforce and creating less disruption for motorists.

## Vegetation removal

The project team is also removing vegetation along the western side of the Pacific Highway from **29 May to 9 June 2023**, weather permitting. Most of this work will be carried out during standard construction hours but there will also be up to **five night shifts** between **7pm and 6am**. Noisier work will be completed before midnight for these shifts.

The project follows strict protocols for tree removal including a two stage process to reduce impacts on native animals and to relocate threatened plants. This process includes clearly marking out environmental protection exclusion zones that will not be impacted and the areas where vegetation will be removed. Additionally, the project's qualified and experienced ecologist carries out a survey before any vegetation removal starts. This assessment identifies and tags all potential habitat trees – ones that typically have hollows or signs of animals living in them. Other vegetation removal work is started while the habitat trees are not disturbed for at least 48 hours. This time allows animals to relocate nearby, including to the 165 nest boxes installed as part of the Coff Harbour bypass.

When habitat trees are felled, it is done using a specific method to minimise any disturbance to native animals. All felled habitat trees are inspected by the project ecologist and they also carry out a health assessment on any native animals found. If they are healthy, they are released into adjacent habitat while any injured fauna are taken into care including use of local wildlife carer groups.

This staged method has been successfully used on previous Transport for NSW projects.

Maps showing the locations of the barrier and signs, and the vegetation removal work are on the following pages.

## Landscape and habitat restoration

Extensive landscaping and revegetation works covering about 150 hectares, at this stage, will be carried out as part of the project. Revegetation includes koala habitat over Roberts Hill and Gatelys Road tunnels and under the bypass at Jordans Creek. This work will connect bushland from the escarpment to the low lying areas of Coffs Harbour creating a significant fauna corridor. Other proposed revegetation will include areas of rainforest and native species. Details will be included in the Place Design and Landscape Plan which the project team will be placing on public display later this year for feedback.

The project will protect roughly 300 hectares of natural habitat through biodiversity offsets including in the Coffs Basin, and Jordans Creek area next to the alignment and Upper Kalang, just west of Urunga. We have also contributed more than \$270,000 to NSW Biodiversity Conservation division for research into the management of Myrtle Rust and its impacts on the Scrub Turpentine species.

## Reuse of timber

As part of the vegetation removal process, all trees are assessed to be used for merchantable timber, the project's furniture within and adjacent to fauna crossings, as rootballs to create aquatic habitat in creeks and help stabilise creek banks or as mulch for project erosion and sediment controls.

More information about this work can be found in the project's Vegetation removal and landscape and habitat factsheet at [www.pacifichighway.nsw.gov.au/coffsharbourbypass](http://www.pacifichighway.nsw.gov.au/coffsharbourbypass).

## How will the work affect you?

Equipment which will be used for the vegetation removal includes excavators, chainsaws, light vehicles, and light towers which will generate some noise. Day time work will also include the use of a mulcher.

Installing signs will use a vacuum truck, light towers, and light vehicles. There will be some noise from the vacuum truck. This work is expected to take a maximum of two hours in each location, with noisier work being done between **8pm and midnight**.

Installing barriers requires semi-trailers with a crane, light towers, and light vehicles, which will generate some noise. The barriers will be installed progressively, meaning the noise and work impacts will be short in any one area.

We will minimise our impact during this work by carrying out work closer to residential properties earlier in the night shifts and switching off vehicles and equipment when not in use. The predicted noise level for night work is expected to be moderate. The figure below explains this noise level.

Comparison of noise levels



There will be speed reductions, lane closures and traffic control on the highway to ensure the safety of workers and motorists. Please keep to speed limits and follow the direction of traffic controllers and signs. For the latest traffic updates, you can call 132 701, visit [livetraffic.com](http://livetraffic.com) or download the Live Traffic NSW App.

### Standard construction hours

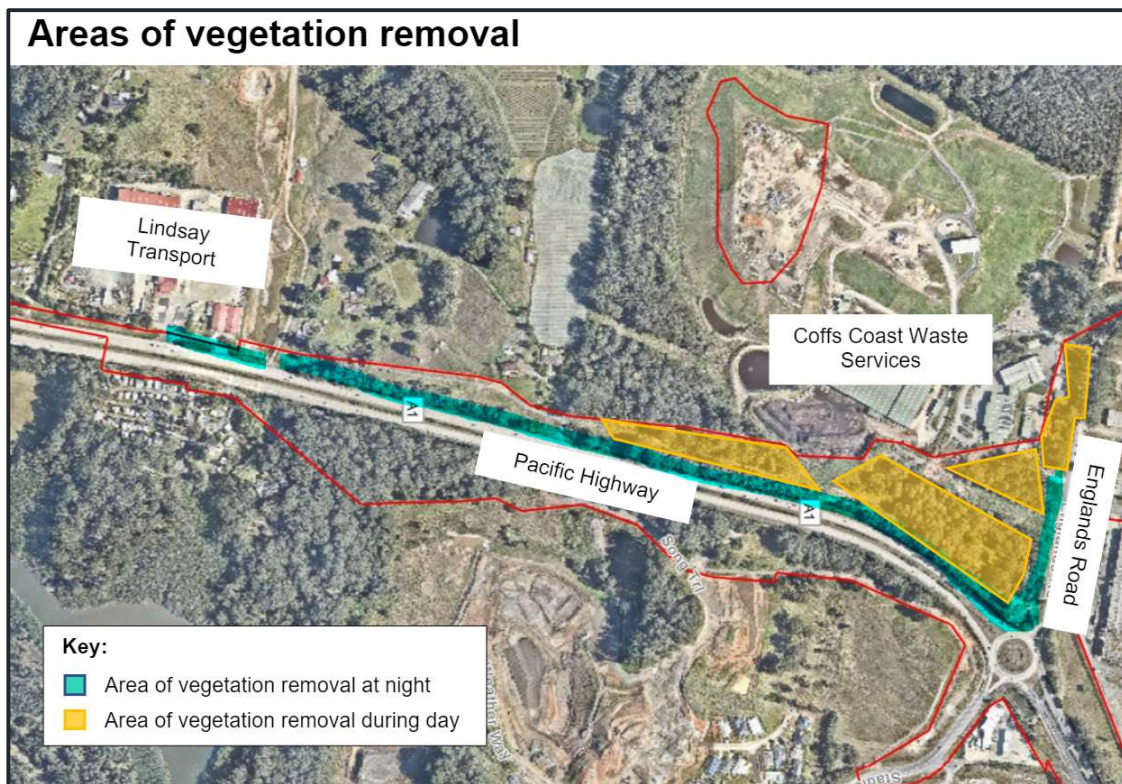
The standard construction hours for the project are:

- Monday to Friday from 7am to 6pm
- Saturday from 8am to 1pm.

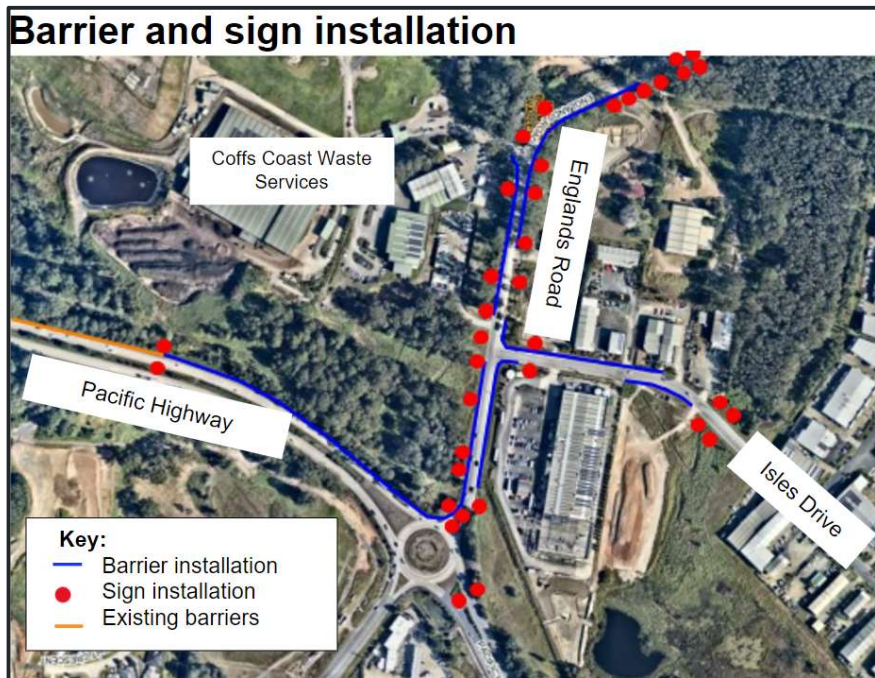
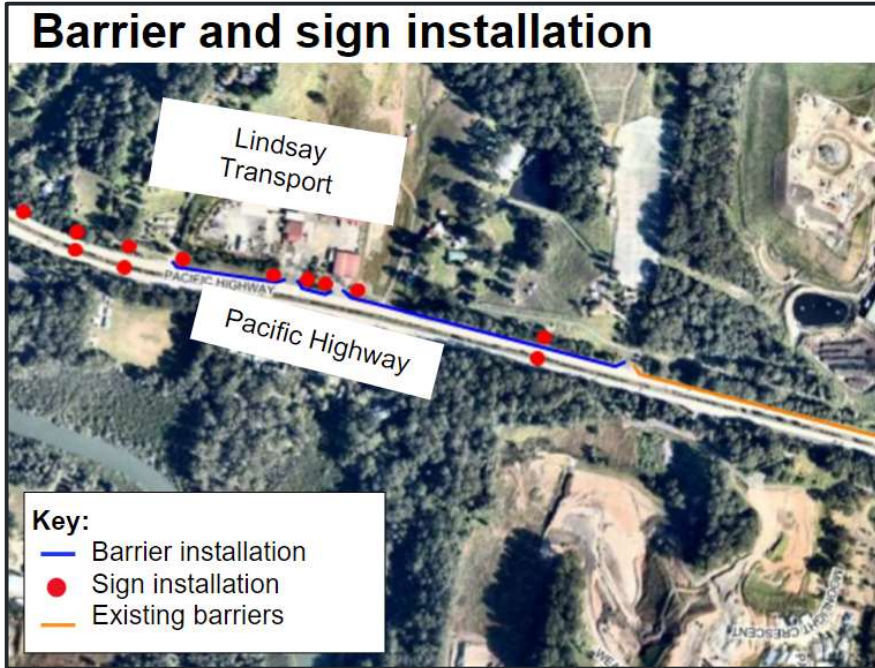
**Out of hours work will be from 7pm to 6am.**

We apologise for any inconvenience and thank you for your patience as we build this important project which will boost the efficiency and safety for local and interstate motorists.

### Locations of work







## Contact

If you have any enquiries and complaints, please contact the project team on 1800 550 621 or [community@chbteam.com.au](mailto:community@chbteam.com.au)

## Translating and interpreting service



If you need help understanding this information, please contact the Translating and Interpreting Service on 131 450 and ask them to call us on 1800 550 621