



July 2023

Temporary construction vehicle crossing on Coramba Road

The Australian and NSW governments are funding the \$2.2 billion, 14-kilometre Coffs Harbour bypass project. The bypass will boost the regional economy and improve connectivity, road transport efficiency and safety for local and interstate motorists.

As part of major construction, the Coffs Harbour bypass project will be setting up a temporary construction vehicle crossing on Coramba Road, between Bennetts and Spagnolos roads from **31 July 2023**. This construction crossing is expected to be in place for about three years.

There will be traffic control in place to safely manage up to 100 construction heavy vehicles and 50 light vehicle movements across Coramba Road per day. Heavy vehicles will be moving earthwork material to build the foundation of the bypass in this area while light vehicles will be construction workers accessing the sites.

To implement this crossing and ensure the safety of motorists and workers, we are making traffic changes in this area. These are slightly different to previously notified changes. We have provided a map in this notification to outline these. This work will be carried out during standard construction hours from **24 July 2023** for **ten days**, weather permitting. It will involve:

- Bringing forward vegetation removal along Coramba Road west of Spagnolos Road to provide better sight lines for motorists using Coramba Road
- Changing line marking along Coramba Road between Roselands Drive and Bennetts Road
- Building a right turn lane into the Spagnolos Road site compound from Coramba Road for westbound construction vehicles only.

Additionally, construction vehicles using the project's compound site on the southern side of Coramba Road/Bennetts Road will only exit the project site via the construction crossing to ensure compliance with Panama disease management wash-down protocols.

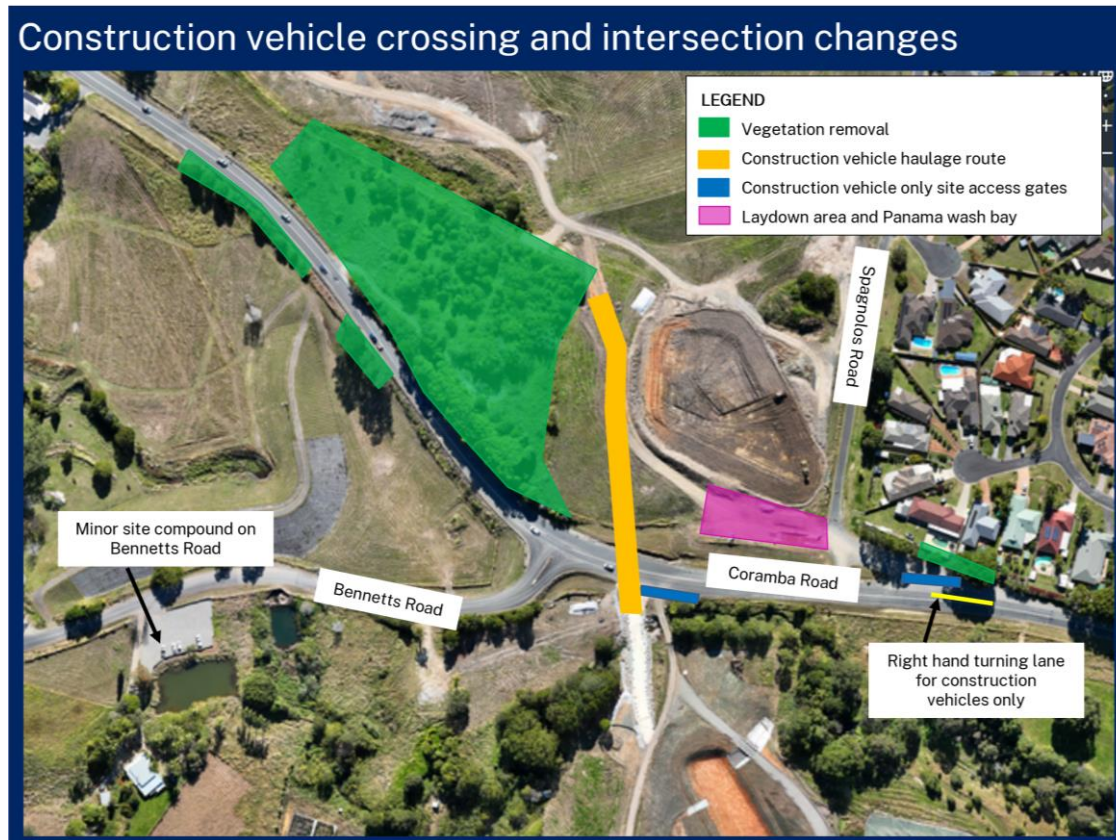
How will the work affect you?

There will be intermittent traffic control in place at the construction crossing and motorists may experience minor delays on Coramba Road.

During this work and throughout construction there will be speed reductions, lane closures and traffic control to ensure the safety of workers and motorists. Motorists should allow extra travel time, be patient and follow directions of traffic controllers.

For the latest traffic updates, you can call 132 701, visit [livetraffic.com](https://www.livetraffic.com) or download the Live Traffic NSW App. Maps showing work locations are included in this notification.

Location of work



Standard construction hours

The standard construction hours for the project are **Monday to Friday from 7am to 6pm and Saturday from 8am to 1pm.**

Looking Ahead

- Earthworks along the alignment, which may include extended hours on Saturdays is ongoing.
- As part of earthwork activities, the project team will begin controlled blasting at various locations along the bypass alignment in coming months.
- Refuelling and plant and machinery maintenance outside of standard construction hours along the alignment is ongoing.

We apologise for any inconvenience and thank you for your patience as we build this important project which will boost the efficiency and safety for local and interstate motorists.

Contact

If you have any enquiries or complaints, please contact the project team on 1800 550 621 or community@chbteam.com.au

Translating and interpreting service



If you need help understanding this information, please contact the Translating and Interpreting Service on 131 450 and ask them to call us on 1800 550 621

