



September 2023

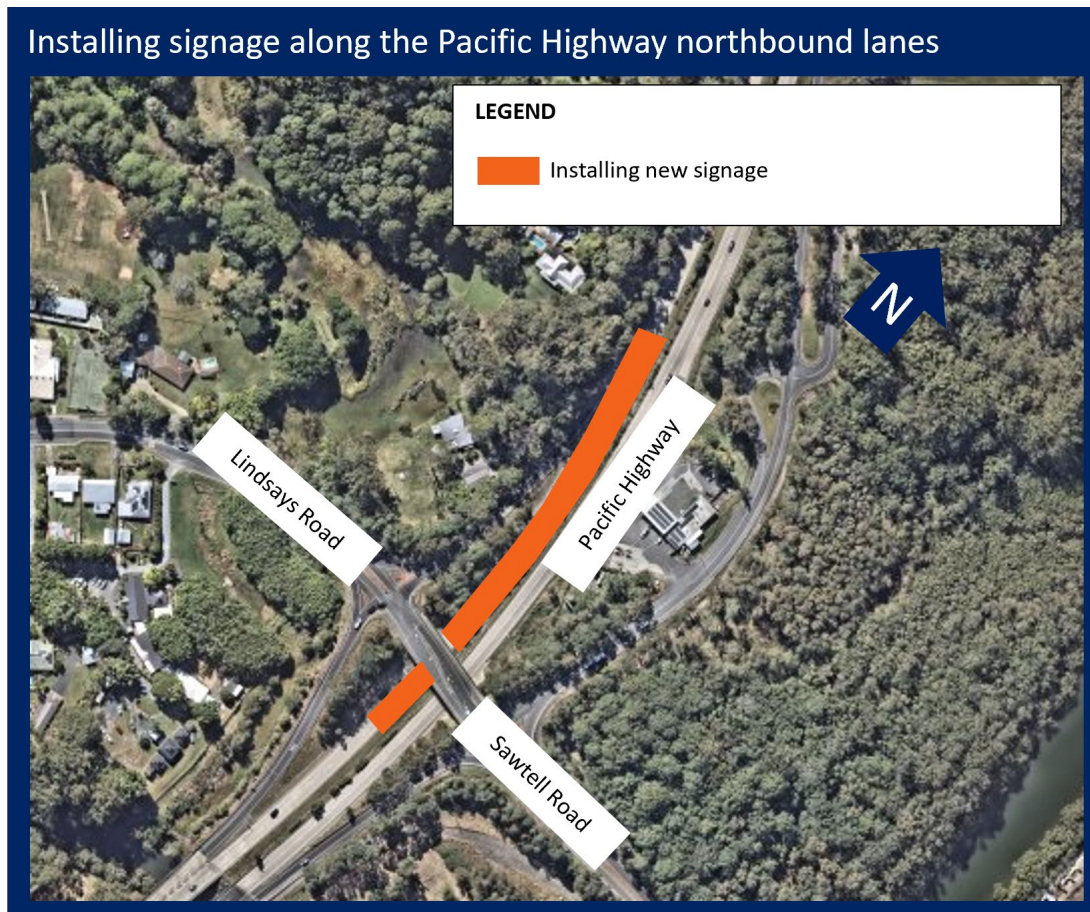
Installing signage on the Pacific Highway and Stadium Drive, North Boambee

The Australian and NSW governments are funding the \$2.2 billion, 14-kilometre Coffs Harbour bypass project. The bypass will boost the regional economy and improve connectivity, road transport efficiency and safety for all motorists.

As part of major construction, the Coffs Harbour bypass project team is installing additional signage along the Pacific Highway and Stadium Drive between Sawtell Interchange and the Englands Road roundabout for the safety of motorists and workers.

This work will be carried out for one night between **7pm and 6am** to minimise impacts to traffic on the highway. It will occur on **Tuesday 3 October 2023**, weather permitting. If rain interrupts, it will be completed the following night.

Locations of work



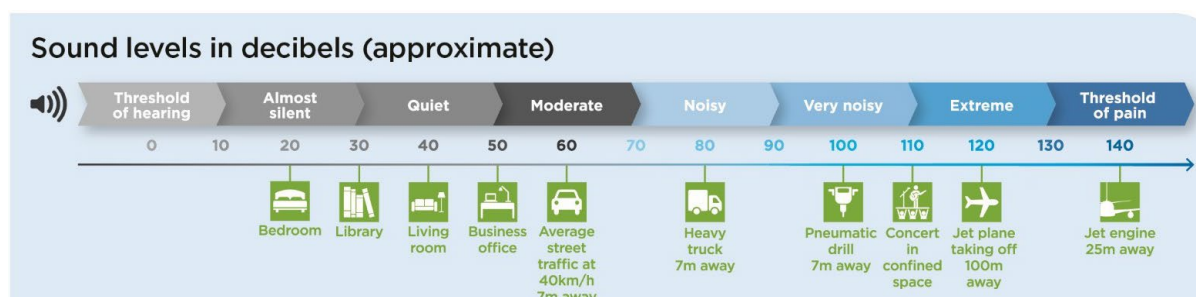


How will the work affect you?

Signs will be installed using vacuum truck, light vehicles, light towers, and traffic control. There will be some noise associated with the operation of the vacuum truck. This work is expected to take about two hours in each location and we will plan noisier work earlier in the night (9pm – midnight).

We will minimise our impact during this work by carrying out work closer to residential properties earlier in the night shifts and switching off vehicles and equipment when not in use. The predicted noise level for this work is expected to be moderate to noisy. The figure below explains this.

Comparison of noise levels



There will be speed reductions, lane closures and traffic control on the northbound and southbound lanes of the Pacific Highway and Stadium Drive to ensure the safety of workers and motorists. Please keep to speed limits and follow the direction of traffic controllers and signs. For the latest traffic updates, you can call 132 701, visit livetraffic.com or download the Live Traffic NSW App.

Safety

Coffs Harbour bypass is continuing major construction with active working sites across the alignment. We have started, and will continue, to be using large plant and equipment across our sites as well as carrying out controlled blasting, hammering and drilling. For the safety of the community and our workers, access to the bypass construction site is restricted to authorised personnel only. Members of the public should not enter any Coffs Harbour bypass construction site at any time.

Road work speed limits will be in place throughout construction of the bypass. Motorists must obey these reduced speed limits at all times for the safety of all road users, the community and the workers. For more information about the importance of motorists' driving to speed limits and conditions, read Transport for NSW's speed factsheet at www.transport.nsw.gov.au/system/files/media/documents/2023/speed-fact-sheet.pdf.

Approved construction hours

The approved construction hours for the project are:

- **Monday to Friday from 7am to 6pm**
- **Saturday from 8am to 1pm.**

Looking ahead

Upcoming construction work in this area includes:

- Concrete batch plant operations at Englands Road, North Boambee which will include some out of hours work to meet construction requirements – this will be notified separately
- Out of hours refuelling and plant and machinery maintenance along the alignment
- Out of hours work along the Pacific Highway (north and south) including median removal, signage, linemarking, vegetation removal, barrier work and investigations– this will be notified separately
- Earthwork activities along the alignment – this may include extended hours on Saturdays which will be notified separately
- Controlled blasting at various locations along the alignment in coming months – specific locations will be notified separately.

We apologise for any inconvenience and thank you for your patience as we build this important project.

Subscribing to the project

The Coffs Harbour bypass electronically distributes weekly updates including about traffic changes and controlled blasting to keep the community and motorists informed during construction. If you would like to be added to our email notification distribution list, please send an email to community@chbteam.com.au including your name, contact details and address.

Contact

If you have any enquiries and complaints, please contact the project team on 1800 550 621 or community@chbteam.com.au

Translating and interpreting service



If you need help understanding this information, please contact the Translating and Interpreting Service on 131 450 and ask them to call us on 1800 550 621