



August 2023

Out of Hours Work on the Coffs Harbour bypass project – northern utilities

Notification of upcoming out of hours for barrier removal on the Pacific Highway, Korora

Quickway has been engaged to continue low impact work on the Coffs Harbour bypass project. As part of the utility relocations, activities to remove existing temporary barriers will occur on the southbound Pacific Highway at Charlesworth Bay Road and the northbound Pacific Highway near the Banana Coast Caravan Park at Korora.

This work will happen outside standard construction hours because of restrictions on when work can happen next to the Pacific Highway, particularly during peak travel times.

Barrier removal is expected to occur over two nights between **6pm and 7am** on **Monday 28 August** and **Tuesday 29 August 2023**, weather permitting.

Should work not be carried out on the above dates, the work will occur between **6pm and 7am** on **Wednesday 30 and Thursday 31 August 2023**.

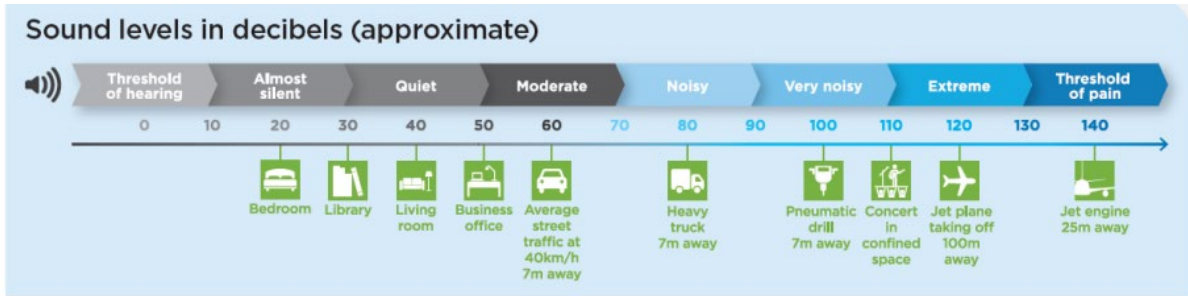
Work will involve machinery, including a franna crane, trucks, powered hand tools, light vehicles and lighting towers. Traffic control will be in place where required on the Pacific Highway and the local network. Traffic volumes will be monitored during this period, and work methods may be adjusted if required.

How could this work impact you?

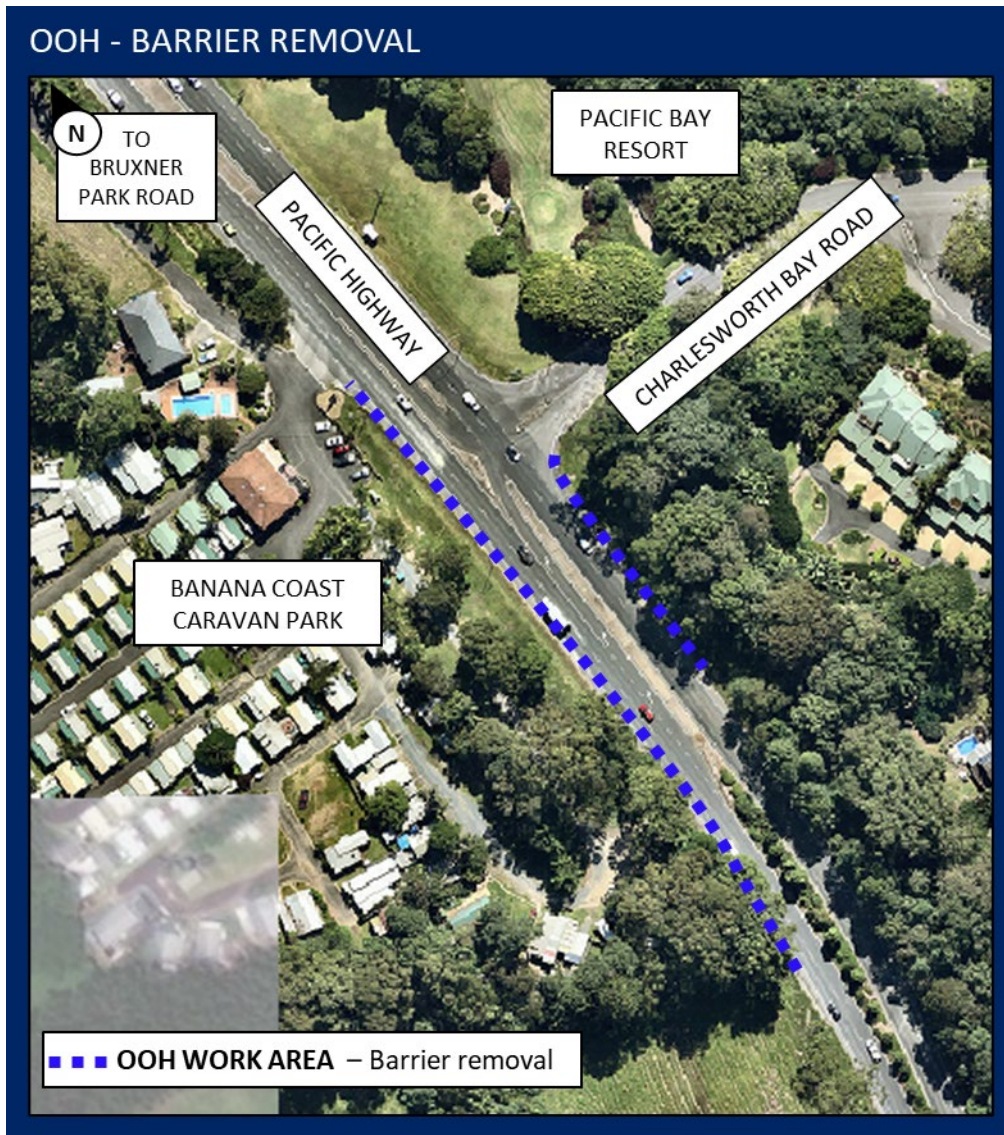
All efforts will be made to minimise disruption to the surrounding community and environment while this work is being carried out. We are committed to mitigating construction impacts on the surrounding residents by:

- consulting with directly impacted residents ahead of the work starting and during works
- turning off vehicles when not in use
- using non-tonal reversing beepers and instructing workers to keep noise to a minimum
- verification monitoring of generated noise levels
- orientating machinery with the noisiest elements directed away from receivers wherever possible.

The predicted noise levels are expected to be at the moderate level for residents closest to the works, and can be viewed in the illustration below:



Location of work



Looking ahead

Over the next three months, additional work is anticipated for as follows:

- Building the new Luke Bowen Footbridge over the Pacific Highway will begin in July 2023. The existing bridge will remain operational while the new bridge is being built

- Closure of the southern entrance to Campbell Close from the Pacific Highway and new connection access from Campbell Close to Pacific Highway from late 2023
- Trenching and under-boring on the western side of the Pacific Highway between Old Coast Road and Bruxner Park Road will continue until September 2023
- Vegetation removal from Old Coast Road to Campbell Close within the project's boundary from July to October 2023
- Vegetation removal on the western side of the highway from Bruxner Park Road to 500m north within the project's boundary both during standard construction hours and outside construction hours from August 2023

Unexpected circumstances may initiate the need for additional out of hours work to occur outside of the above timeframes. In all events, Transport for NSW will provide written notification before the work commences. In addition, directly impacted residents will be contacted and advised of the likely impact and what we are doing to minimise disruption during the work.

Contact

If you have any questions or complaints or would like more information, please contact our project team:

1800 550 621

Community@chbteam.com.au

pacifichighway.nsw.gov.au/coffsharbourbypass

Translating and interpreting service



If you need help understanding this information, please contact the Translating and Interpreting Service on **13 14 50** and ask them to call us on **1800 550 621**.