



## Upcoming construction near Kororo Public School

The Australian and NSW governments are funding the \$2.2 billion, 14-kilometre Coffs Harbour bypass project. The bypass will boost the regional economy and improve connectivity, road transport efficiency and safety for all motorists.

From **Monday 3 July 2023**, the Coffs Harbour bypass team is making a number of traffic changes to the streets around the Kororo Public School and continuing to remove vegetation in this area. Most of this work will take place during **standard construction hours** with some night work required for vegetation removal and installing temporary barriers.

This work is required to prepare the area for construction of the new Luke Bowen Footbridge and then the new Korora bus interchange.

Traffic changes will include:

- Permanent closure of Korora School Road at the Pacific Highway from Monday 3 July 2023
- Temporary relocation of the Kororo Public School's Kiss and Ride from Korora School Road to James Small Drive from Monday 17 July 2023
- Temporary extension of Russ Hammond Close into the northern end of Korora School Road
- Temporary parking areas on Korora School Road north and south of the school.

Maps showing work locations are included in this notification.

### Standard construction hours

The standard construction hours for the project are:

- **Monday to Friday from 7am to 6pm**
- **Saturday from 8am to 1pm.**

We apologise for any inconvenience and thank you for your patience as we build this important project which will boost the efficiency and safety for local and interstate motorists.

### Traffic changes due to the permanent closure of Korora School Road

From **Monday 3 July 2023**, the existing entrance to Korora School Road southbound from the Pacific Highway will permanently close. Residents, deliveries to the school, access for emergency services and access to disabled parking spaces on Korora School Road will be via traffic control from James Small Drive.

Parents using the Kororo Public School July holiday program (OOSH) will use the school access gate on James Small Drive.

The project team is building a temporary road extension at Russ Hammond Close to the north of Kororo Public School to allow construction of temporary public parking.

The team is also building temporary parking spaces for Kororo School teachers on Korora School Road, south of the school. This is to replace parking spaces at the front of the school on Korora School Road which need to be removed for construction. The new parking area will be accessed from James Small Drive.

From **Monday 17 July 2023**, the following changes to vehicle parking and deliveries at Kororo Public School will be in place until the temporary Russ Hammond Close connection is complete:

- The parking area for visitors including disabled parking spaces will be accessed from Korora School Road via James Small Drive.
- Emergency services and school deliveries will access Kororo Public School from Korora School Road via James Small Drive.
- The new Korora School Road parking area will be accessed from James Small Drive and a new path for teachers accessing the school from the carpark.

During construction of the Russ Hammond Close extension motorists can expect some short delays. Please keep to speed limits and follow the direction of traffic controllers and signs.

Variable Message Signs (VMS) will be located on James Small Drive to direct motorists and the project team will monitor the area for pedestrian safety.

For the latest traffic updates, you can call 132 701, visit [livetraffic.com](http://livetraffic.com) or download the Live Traffic NSW App.

## Changes to Kororo Public School and Kiss and Ride zone

From **Monday 17 July 2023**, the Kororo Public School Kiss and Ride zone will move from Korora School Road to James Small Drive outside Kororo Public School. The Kiss and Ride zone will only operate on the western side of James Small Drive.

There will be a designated No Parking Zone on James Small Drive and a Kororo Public School supervisor will be stationed to assist students during school pickup hours.

For the safety of students, teachers, parents and the local community, the Kiss and Ride zone must be accessed from the southern end of James Small Drive and exited via the northern end of James Small Drive.

Drivers should continue to follow the Kororo Public School's procedures for safely dropping or picking up children from the designated zone.

Due to the temporary relocation of the Kiss and Ride zone, there will be an increase in vehicles accessing the school from the southern end of James Small Drive between 8am to 9:30am and 2:30pm and 4pm. This increase will occur during school pickup and drop off periods which generally happens over an hour twice daily during school days. Motorists should allow extra travel time during these times.

A map showing this change is located on the following page.

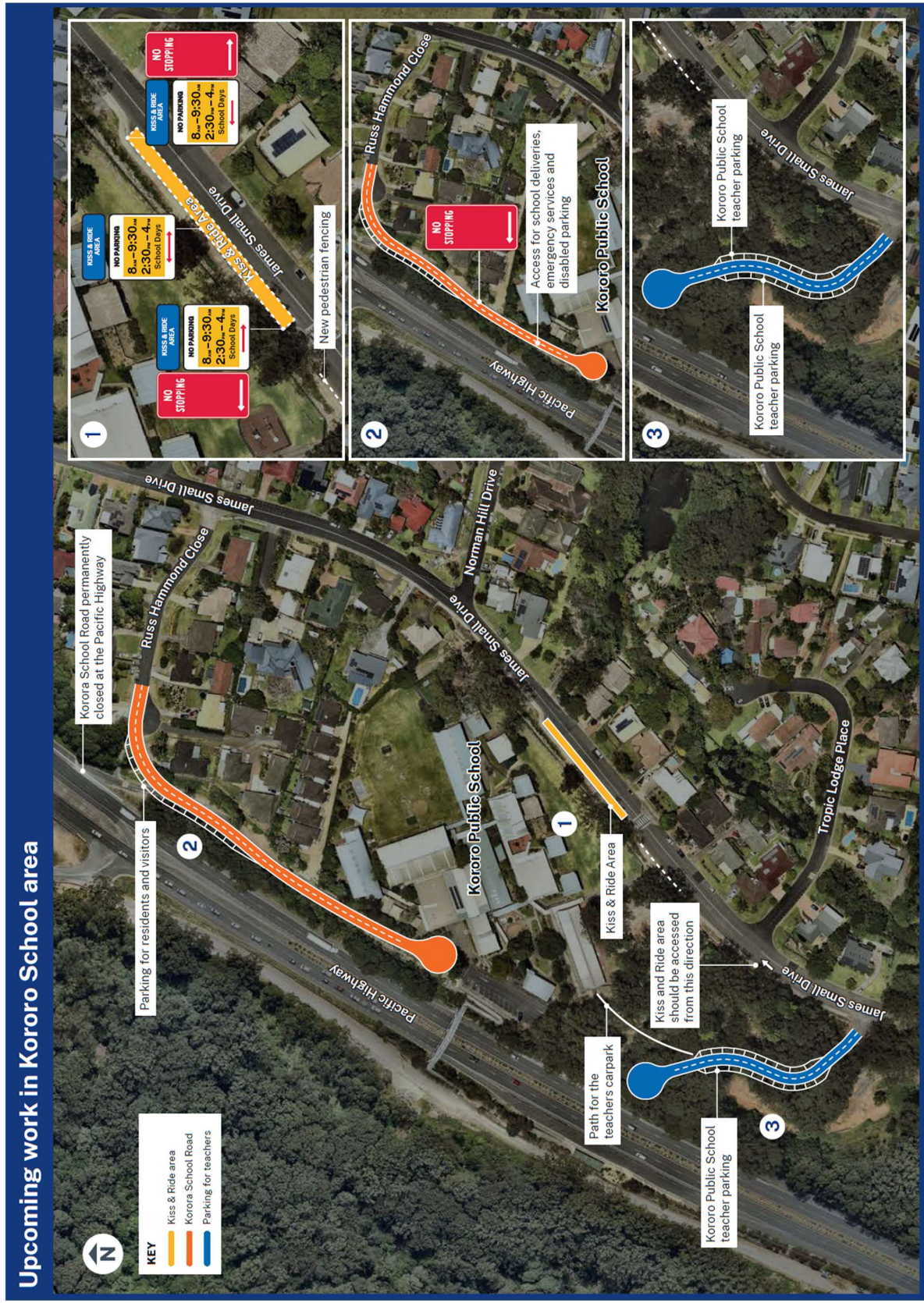
## Vegetation removal

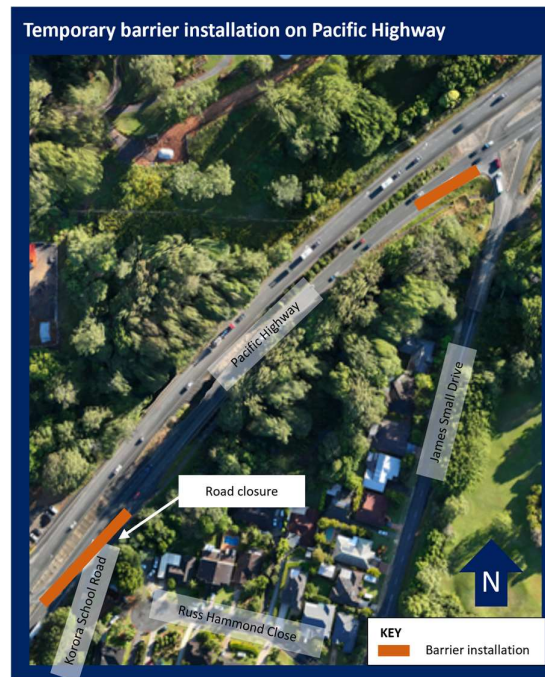
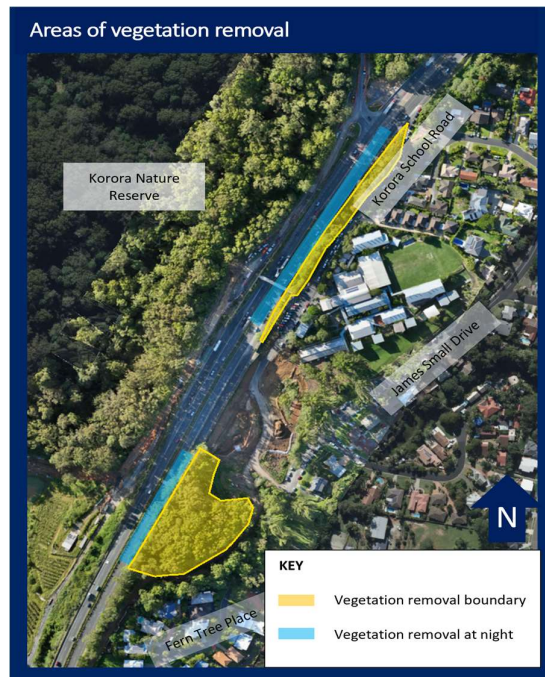
The project team is continuing vegetation removal along the eastern side of the Pacific Highway between Korora School Road and Fern Tree Place from **Monday 3 July 2023**. Most of this work will be completed during **standard construction hours**, however, there will also be **six nights** of work required **between 7pm and 6am**.

For the safety of motorists on the Pacific Highway, there will be traffic control in place on the southbound carriageway near the Luke Bowen Footbridge. Motorists can expect intermittent short stoppages of up to five minutes at times. Private access will be maintained at all time for residents.

For more information about vegetation removal and landscape and habitat restoration, please read our fact sheet online at [pacifichighway.nsw.gov.au](http://pacifichighway.nsw.gov.au).

## Locations of work





## Installing temporary barriers

The project team and Coastal Works are installing temporary construction barriers along the southbound lane of the Pacific Highway between James Small Drive and Korora School Road as part of the road closure at Korora School Road and utility relocations for the Coffs Harbour bypass. This work will be carried out for two nights on **3 July and 4 July 2023**. If rain interrupts, it will be carried out on **10 July and 11 July 2023**. This work will be done at night **between 7pm and 6am** because of lower traffic volumes on the highway making it safer for the project's workforce and creating less disruption for motorists.

## How will the work affect you?

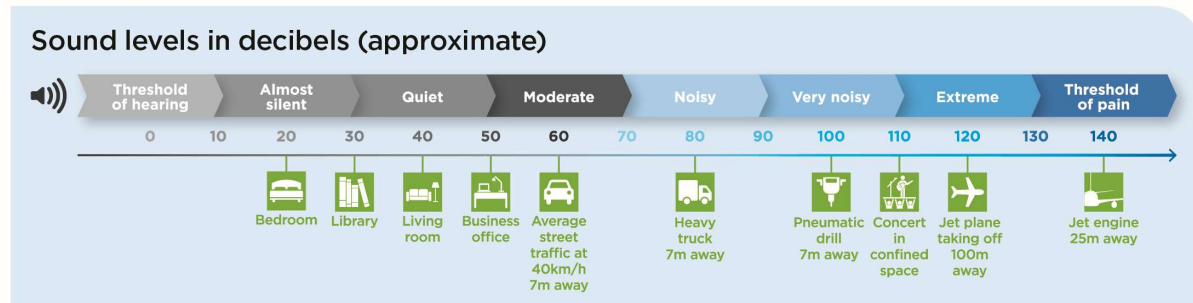
Dust will be managed using water carts and longer term binders as required.

Equipment to be used to install temporary construction barriers will be a truck with a crane, light tower, and traffic control vehicles, which will generate some noise. Pacific Highway shoulder and slow lane will be closed with reduced roadwork speed limit during the night works with short stops as required.

For the safety of workers and motorists, there will be speed reductions, lane closures and traffic control on the highway. Please keep to speed limits and follow the direction of traffic controllers and signs. For the latest traffic updates, you can call 132 701, visit [livetraffic.com](http://livetraffic.com) or download the Live Traffic NSW App

Residents can expect the level to be "noisy" from plant and machinery including light vehicles, rollers, excavators, chainsaws, mulchers (day time only) and trucks. We will minimise our impact during this work by scheduling work closer to residential properties earlier in the night and switching off vehicles and equipment when not in use.

## Comparison of noise levels



## Upcoming community information session

The project team is holding a community information session. There will be no formal presentation, please drop in at any time.

**Venue:** Opal Cove Resort, Opal Boulevard Coffs Harbour NSW

**Date:** Thursday 29 June 2023

**Time:** 2pm – 8pm

You can also visit our community information van on **Monday 3 July** at **Korora Sport Ground**, Trevally Street, Korora from **noon to 2.30pm**. For more information about future community van locations across Coffs Harbour visit [pacifichighway.nsw.gov.au](http://pacifichighway.nsw.gov.au).

## Looking ahead

- Installing a new watermain valve on Charlesworth Bay Road at Korora. Work is proposed to occur over one night between **6pm and 7am** on **Monday 3 July 2023**, or **Monday 10 July 2023**, depending on weather.
- Trenching and under-boring on the western side of the Pacific Highway between Old Coast Road and Bruxner Park Road will continue until **September 2023**.
- Building the new Luke Bowen Footbridge over the Pacific Highway will begin in **July 2023**. The existing bridge will remain operational while the new bridge is being built.

## Contact

If you have any enquiries and complaints, please contact the project team on 1800 550 621 or [community@chbteam.com.au](mailto:community@chbteam.com.au)

## Translating and interpreting service



If you need help understanding this information, please contact the Translating and Interpreting Service on 131 450 and ask them to call us on 1800 550 621