

Out of hours work on the Pacific Highway, Boambee

Coffs Harbour bypass

September 2024



Transport for NSW acknowledges the Gumbaynggirr people as the Traditional Custodians of the lands on which we work and pays respect to Elders past and present.

The Australian and NSW Governments are investing in the 14-kilometre Coffs Harbour bypass project. The bypass will boost the regional economy and improve connectivity, road transport efficiency and safety for all motorists.

What work are we doing?

As part of major construction, the project will be carrying out work outside of approved construction hours along the western side of the Pacific Highway between Englands Road/Stadium Drive and Sawtell Interchange.

The work to be carried out includes:

- Removing streetlights
- Relocating concrete barriers
- Street sweeping
- Installing drainage.

We have provided a map showing the locations of this work.

When we'll be working

Out of hours work on the highway will be completed between **Thursday 26 September 2024** and **early November 2024**.

If weather interrupts, work will continue into December 2024. This work will be carried out from **Monday to Friday** between **7pm and 6am**.

As required under our Minister's Conditions of Approval (MCoA), we will not work more than two nights in a row.

What will this mean for you?

There will a single lane closure on the Pacific Highway northbound carriageway at Boambee.

Equipment used for this work includes light vehicles, light towers, street sweeper and traffic control vehicles, and will also include:

- A crane, 50 tonne excavator, elevated work platform for removing street lighting
- A crane for relocating concrete barriers
- Street sweeper for cleaning the road
- Rollers, excavators, compacter and concrete saw for installing drainage.

The predicted noise level for this work is moderate to noisy. To help explain this, we have included a diagram of comparative noise levels.

Managing our impacts

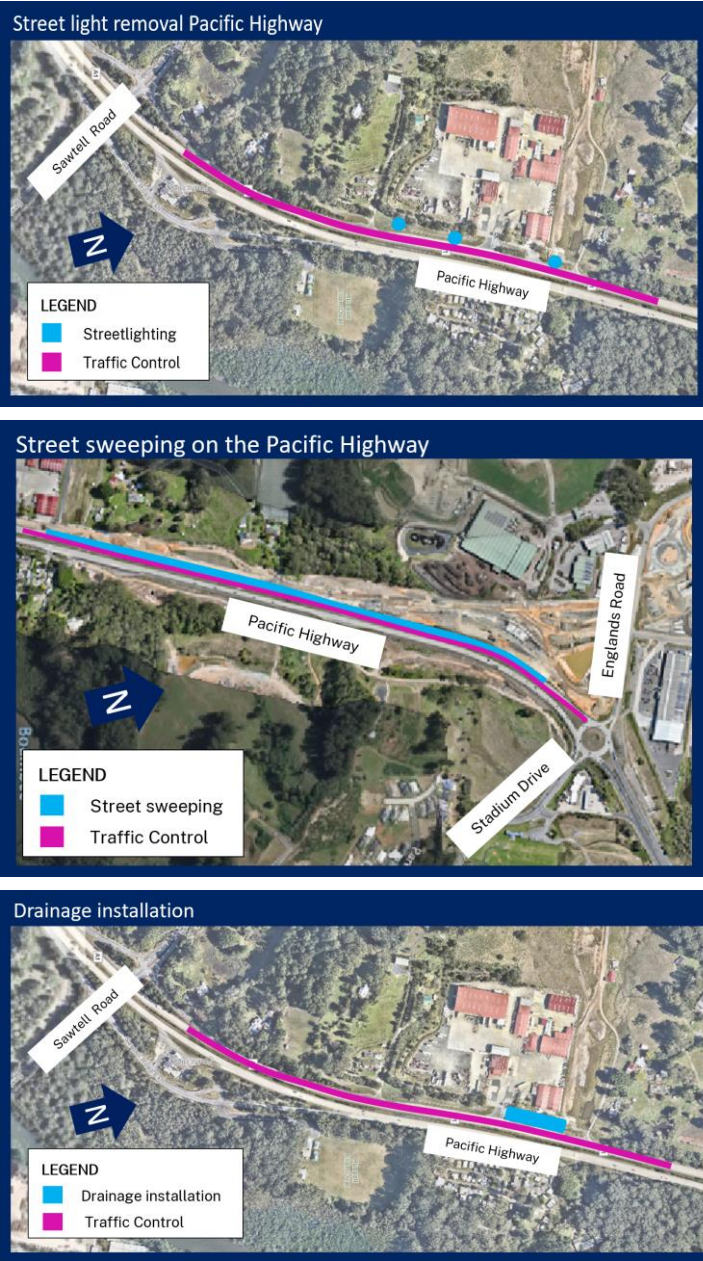
The project's MCoA sets strict requirements for work outside of approved construction hours and noise, vibration, and dust management.

To ensure compliance and mitigate impacts, we:

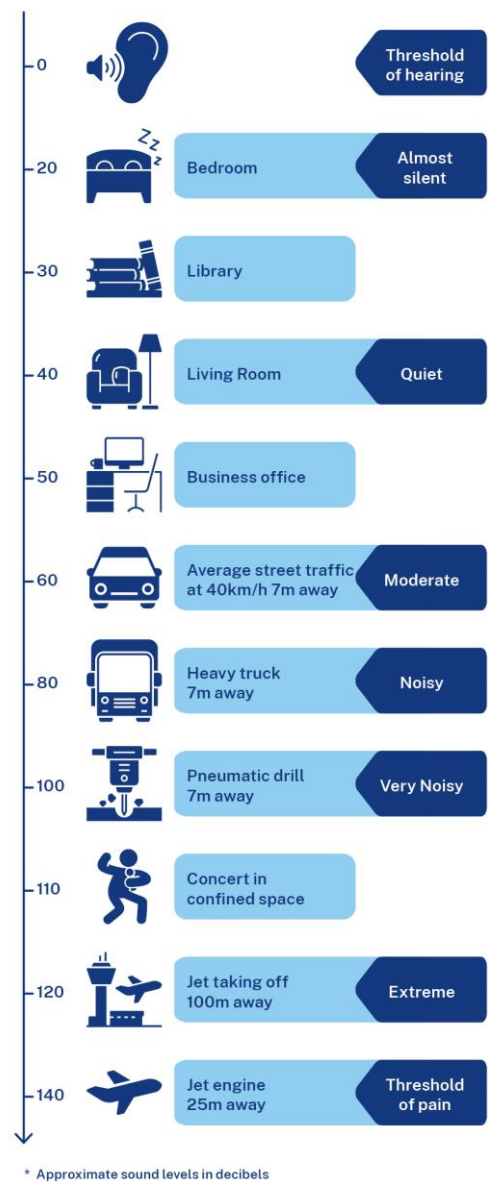
- Monitor noise levels, dust and vibration
- Turn off plant and machinery when not in use
- Use non-tonal reversing beepers and instruct workers to keep noise to a minimum
- Position plant and equipment as far from nearby neighbours as possible.



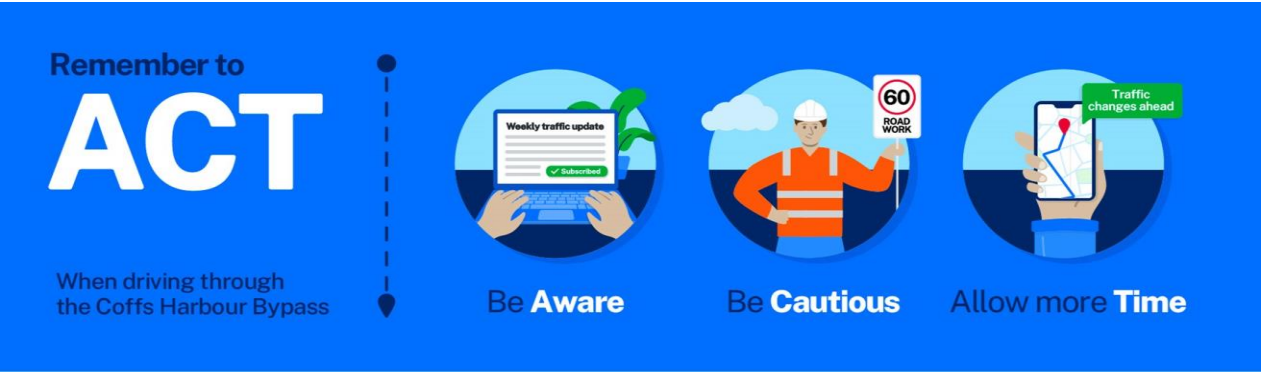
Locations



Comparison in noise levels



Remember to ACT



Out of hours construction work

Current and upcoming out of hours construction work in this area includes:

- Delivering and pouring concrete and laying asphalt for temperature, quality and safety reasons
- Sawing concrete
- Delivering machinery and materials and bridge elements using the project's approved heavy vehicle routes
- Installing and relocating signage, line marking and barriers
- Maintaining roads and vegetation and street sweeping
- Carrying out survey, geotechnical and pavement investigations
- Maintaining and refuelling plant and machinery and maintaining internal project haulage routes
- Building and maintaining environmental controls
- Maintaining plant and machinery and refuelling.

Contact us



Project information and 24-hour construction response line **1800 550 621**



View our **community information van** timetable



community@CHBteam.com.au



For the latest traffic updates:

Call 132 701, visit livetraffic.com or download the app Live Traffic NSW



pacifichighway.nsw.gov.au/coffsharbourbypass



Interpreter service

For languages other than English call 131 450



PO Box 565, Toormina, NSW 2452

www.transport.nsw.gov.au/privacy-statement#Your_Privacy