

# Out of hours bridge work and traffic changes, Korora

## Coffs Harbour bypass

September 2024



Transport for NSW acknowledges the Gumbaynggirr people as the Traditional Custodians of the lands on which we work and pays respect to Elders past and present.

The Australian and NSW Governments are investing in the 14-kilometre Coffs Harbour bypass project. The bypass will boost the regional economy and improve connectivity, road transport efficiency and safety for all motorists.

A new Luke Bowen pedestrian bridge is being built as part of the Coffs Harbour bypass.

Work to install the steel truss segments for the western ramp, eastern ramp and main span over the Pacific Highway will be carried out between **Friday 4 October** and **Sunday 20 October**. If weather interrupts this work it will be carried out the following week.

Extensive planning has gone into delivering this work safely focussing on minimal disruption to road users and the community.

This notification will reference a contraflow traffic arrangement. Currently the road operates with two lanes in each direction (four in total). Two lanes will be closed, and all traffic will be moved onto the remaining two lanes, resulting in one lane of traffic travelling in each direction.

Maps are provided at the back of this notification to assist in explaining the changes.

### Western ramp

The 30-metre western ramp will be delivered and installed during approved construction hours on **Friday 4 October**.

Short stoppages on Old Coast Road may be required to move the span into the lifting location.

The existing footbridge and the northbound and southbound bus interchanges will remain open during this work. There is no impact to highway traffic.

### Eastern ramp

Work to install the 56-metre eastern ramp will be completed over four days between **Tuesday 8 October to Friday 11 October**.

There will be short stoppages on Korora School Road throughout this work and access to all street parking on this road, including the disabled parking near the school, will be temporarily closed.

The existing footbridge and the north and southbound bus bays will remain open during this work.

On **Wednesday 9 October** a crane will be set up on Korora School Road during approved construction hours.

The eastern ramp truss will be transported across the Pacific Highway **outside of approved construction hours**. Pacific Highway traffic will be moved to a contraflow arrangement on the southbound carriageway and short stoppages should be expected (Map 1). Pedestrians and cyclists will be required to detour via James Small Drive. The northbound bus interchange will be closed during the contraflow arrangement.

Impacts to local roads during contraflow include:

- **Old Coast Road** – short stoppages and no right turn into Old Coast Road from the Pacific Highway southbound carriageway.



- **Opal Boulevard** – short stoppages and no right turn into Opal Boulevard from the Pacific Highway northbound carriageway. Residents will be required to use the Sapphire Beach Interchange.
- **James Small Drive (north)** – short stoppages.

On **Thursday 10 October** an additional crane will be set up on Korora School Road and the eastern ramp will be installed during approved construction hours. If the install is delayed due to weather, it will be completed the following day. Following the lift, one of the cranes will be demobilised.

On **Friday 11 October** the other crane will be demobilised during approved construction hours.

## Main span

Work to install the 60-metre main span will be completed **outside of approved construction** hours from 5pm on **Saturday 19 October** to 7:30am on **Sunday 20 October**.

The existing footbridge and the northbound and southbound bus interchanges will be closed at times during this work.

On **Saturday 19 October** concrete barriers on the western side of the highway will be temporarily removed so a crane can be moved onto the Pacific Highway northbound carriageway.

Pacific Highway traffic will be moved to a contraflow arrangement on the southbound carriageway with a reduced speed limit of 40km/h. Cyclists will be required to detour via James Small Drive. Pedestrians and cyclists will be required to detour via James Small Drive. This arrangement will be in place for about five hours (Map 2).

On **Sunday 20 October** the main span will be moved into position via the Pacific Highway southbound carriageway and installed.

**Between 12am and 3am**, both lanes of the Pacific Highway will be temporarily closed to all vehicles between Bruxner Park Road and Old Coast Road (Map 3).

Light vehicles, pedestrians cyclists will be detoured via James Small Drive. Emergency services, buses and garbage trucks will also use James Small Drive.

There is no available detour for heavy vehicles. Heavy vehicles are encouraged to park up in rest areas or truck parking bays before they get to

Korora, north of Coffs Harbour. During the three-hour closure of the highway parking will be provided for any heavy vehicles unable to avoid the work area.

Temporary changes to local road accesses during this work include:

- **James Small Drive (south)** – no right turn onto the Pacific Highway
- **Bruxner Park Road** – permitted to cross the highway and turn right onto the highway
- **Old Coast Road** – intersection with the Pacific Highway closed. Motorists will be required to use the Old Coast Road overpass of the highway or the Sapphire Beach Interchange
- **Opal Boulevard** – no right turn into Opal Boulevard from the highway. Motorists will be required to use the Sapphire Beach Interchange.

Following the temporary closure, the Pacific Highway will again be placed under a contraflow arrangement on the southbound carriageway for about five hours while the crane and worksite is demobilised (Map 2).

Both lanes of the Pacific Highway will be reopened from 7:30am on **Sunday 20 October**.

All changed road accesses will be managed under traffic control.

## Remember to ACT



Subscribe to our weekly traffic updates for more information:

[www.pacifichighway.nsw.gov.au/coffs-harbour-bypass-webform](http://www.pacifichighway.nsw.gov.au/coffs-harbour-bypass-webform).

## Minimising impacts

Lifting the bridge spans into place involves using trucks and trailers, cranes, elevated working platforms, light vehicles and lighting towers. Concrete barriers on the Pacific Highway will also be temporarily removed and then reinstated as part of this work.

This work will be moderate to noisy at times. We have included a noise level comparison within this notification.

We will position lighting towers and machinery away from residential properties where possible and will turn off machinery when not in use.

## Looking ahead

A similar temporary detour and closure will occur in early 2025 for the removal of the existing Luke Bowen Footbridge main span. The project team will provide more specific information before this work is carried out.

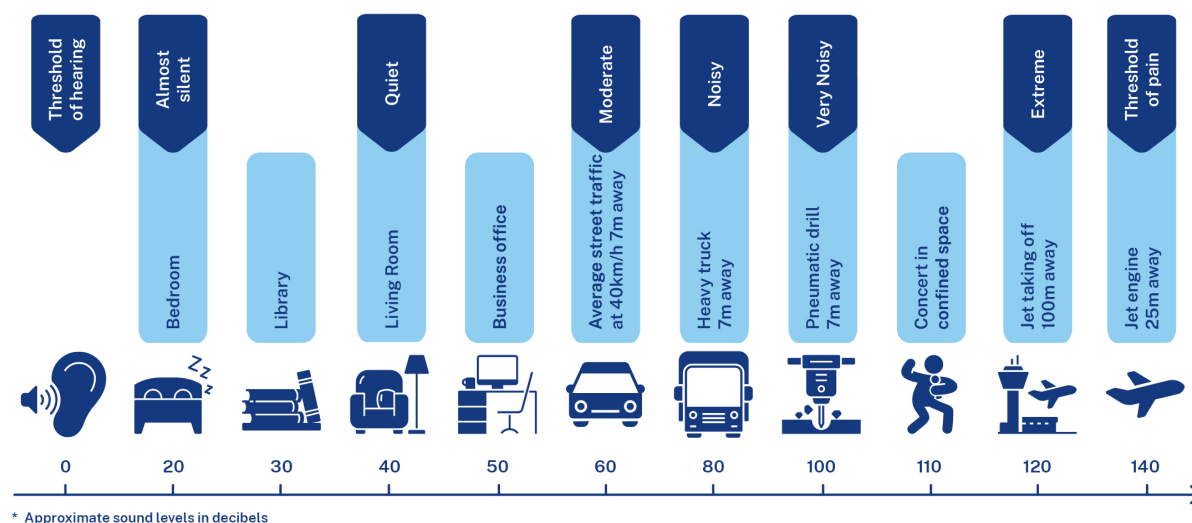
## Other construction work

Current and upcoming construction work in this area includes:

- Removing median, guard rail and vegetation and building pavement along the Pacific Highway between Charlesworth Bay Road and Sapphire Beach Interchange, including some out of hours work
- Changing traffic arrangements on the Pacific Highway and local roads including for pedestrians and cyclists

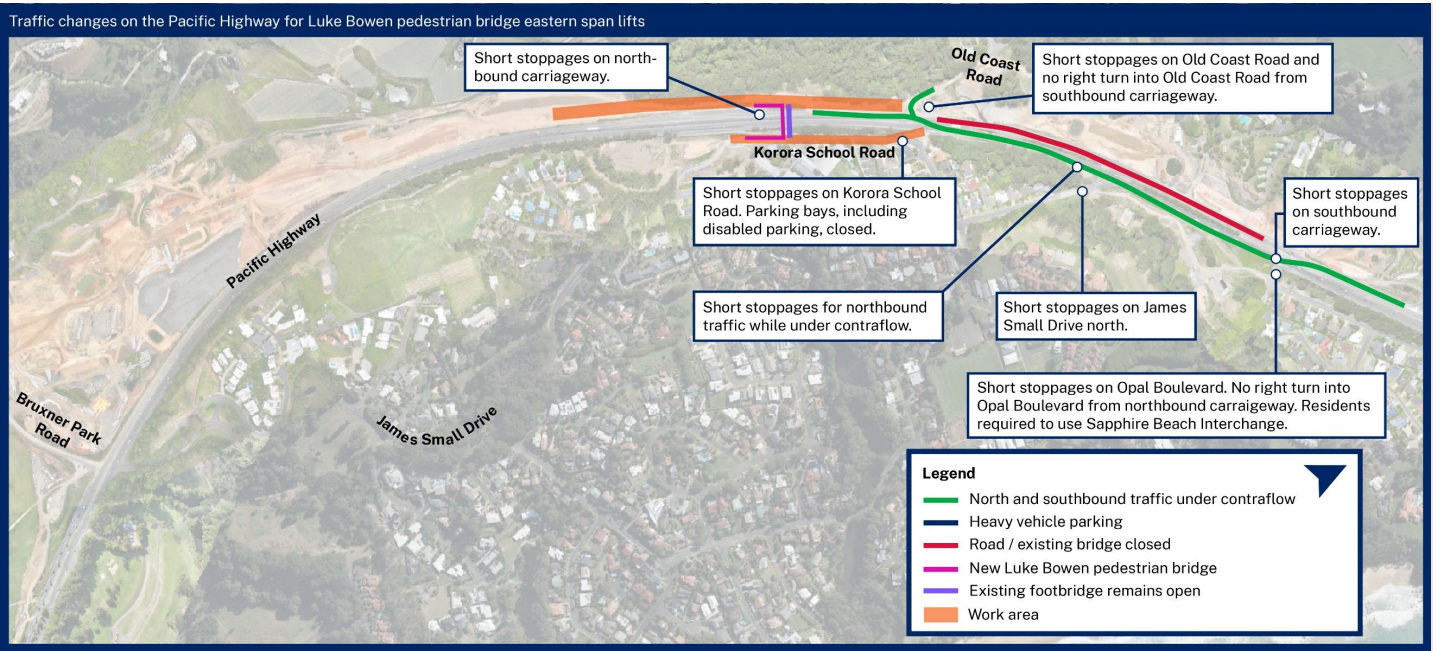
- Carrying out bulk earthwork, controlled blasting and installing culverts and drains
- Delivering and installing precast elements and in-situ concrete pours for bridges, including some out of hours work
- Delivering machinery and materials using the project's approved heavy vehicle routes, including some out of hours work
- Installing and relocating fencing, signage, line marking and barriers, including some out of hours work
- Maintaining roads and vegetation and street sweeping, including some out of hours work
- Carrying out survey, geotechnical and pavement investigations, including some out of hours work
- Maintaining and refuelling plant and machinery, mainly out of hours work
- Out of hours concrete deliveries and pouring
- Out of hours internal haulage route and environmental controls maintenance
- Switching traffic onto new road, including some out of hours work
- Changing local road accesses and temporary and permanent closures, particularly to the Pacific Highway, including some out of hours work
- Paving new sections of road, including some out of hours work.

## Comparison in noise levels

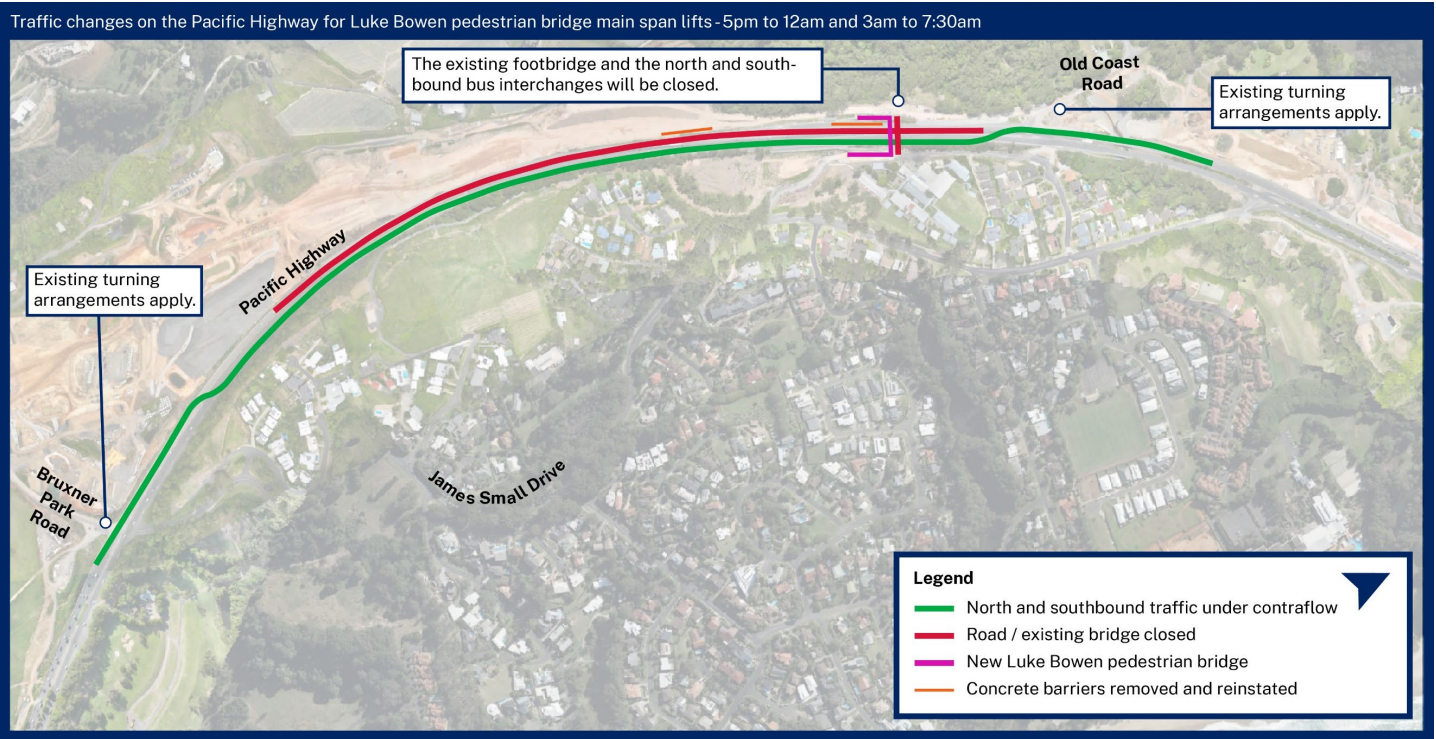




Map 1:

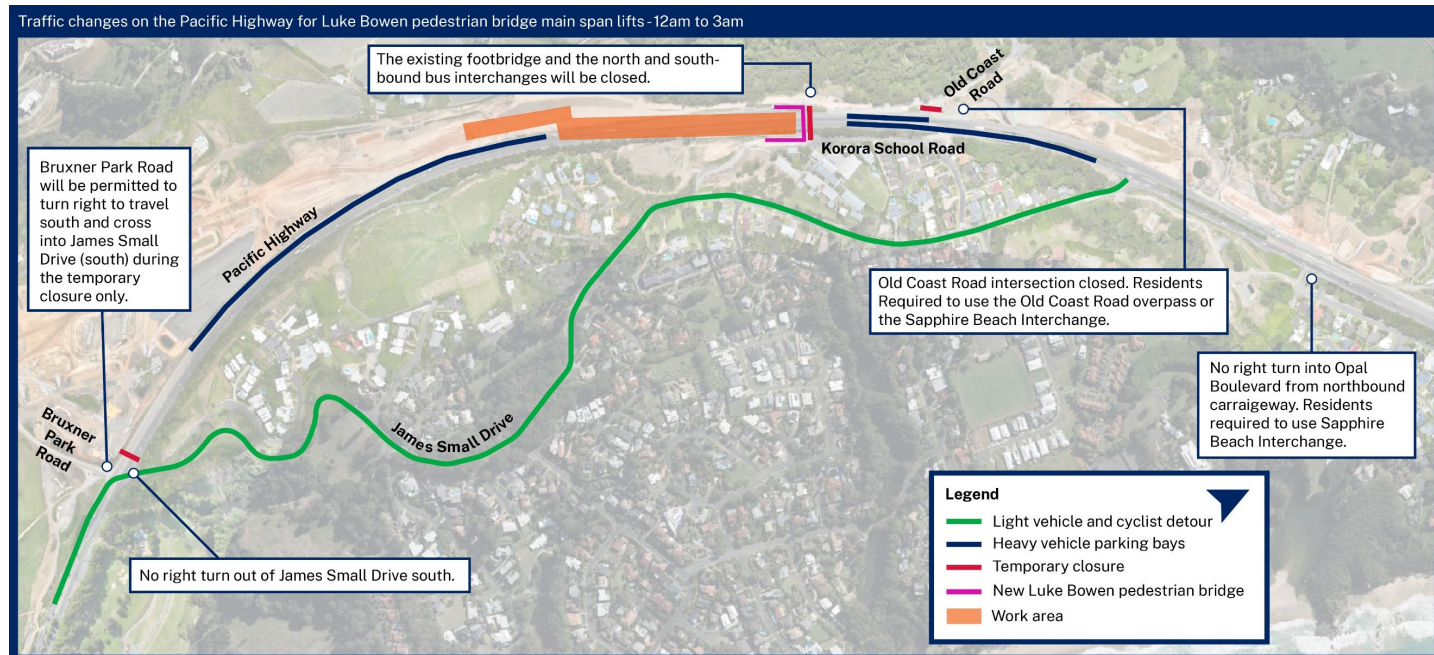


Map 2:





## Map 3:



## Contact us



Project information and 24-hour construction response line **1800 550 621**



View our **community information van** timetable



**community@CHBteam.com.au**



**For the latest traffic updates:**  
Call 132 701, visit [livetraffic.com](http://livetraffic.com) or download the app Live Traffic NSW



**[pacifichighway.nsw.gov.au/coffsharbourbypass](http://pacifichighway.nsw.gov.au/coffsharbourbypass)**



**Interpreter service**  
For languages other than English call 131 450



PO Box 565, Toormina, NSW 2452

[www.transport.nsw.gov.au/privacy-statement#Your\\_Privacy](http://www.transport.nsw.gov.au/privacy-statement#Your_Privacy)



To subscribe to the email distribution list for this project, please contact [community@CHBteam.com.au](mailto:community@CHBteam.com.au)