

Coffs Harbour bypass

BYPASS TAKES SHAPE AS EARTHWORKS NEAR THE TWO-THIRDS MARK

Excavators, bulldozers, dump trucks and other plant have dug and moved 2.1 million cubic metres of earth since major construction started – that’s 64 percent of the required earthworks.

Work on the project’s three tunnels is progressing well, with about 290 metres of heading excavated at Gatelys Road Tunnel and great progress made on building tunnel portals at Shephards Lane and Roberts Hill.

PROGRAM & MILESTONES

Great progress

- ✓ First steel trusses for the new Luke Bowen pedestrian bridge arrived on site
- ✓ Final Place Design and Landscape Plan published
- ✓ Crane pads built for the bridge over the North Coast Railway line
- ✓ Two concrete decks poured for bridges along the alignment, including the bridge over Newports Creek tributary and one at Korora Hill Interchange

Looking forward

- North: three steel trusses for the new Luke Bowen pedestrian bridge will be lifted in September and October
- South: installing 20 girders on the bridge over North Boambee Road
- Start 24/7 tunnelling construction at Gatelys Road Tunnel south
- Continue controlled blasting and bridge construction at new locations

39% complete

STRUCTURES

40/101
CULVERTS
IN PLACE

178/264
BRIDGE
PILES IN
PLACE

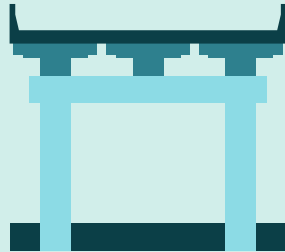
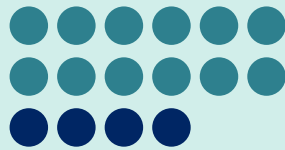
25/250
SUPER T
GIRDERS
LANDED

16/42
ABUTMENTS
COMPLETED

6/20
HEADSTOCKS
COMPLETED

2/38
DECK
SECTIONS
COMPLETED

12 / 16
BRIDGES UNDER
CONSTRUCTION



* There are now 16 bridges being built for the bypass, not 17, as the bridge over Jordans Creek tributary will be a culvert.



First trusses for the new Luke Bowen pedestrian bridge arrived on site for welding and painting

TUNNELLING

Gatelys Road Tunnel (about 410 metres long)

Heading excavated

Benching excavation

metres 50 100 150 200 250 300 350 400 410

First the tunnel heading is excavated, followed by the benching. After this, the tunnel is paved and fitted out with mechanical and electrical systems.



A worker tagging into Gatelys Road Tunnel



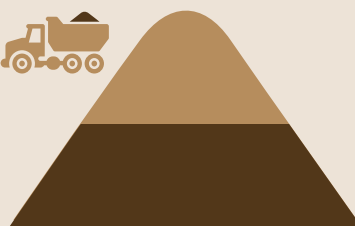
Tunnelling excavation has not yet started at Roberts Hill Tunnel (pictured) or Shephards Lane Tunnel



Tunnelling is progressing well at Gatelys Road

EARTHWORKS

2.1 million
CUBIC METRES
of earthwork



64%
of 3.3 million total
completed to date

* 2.1 million cubic metres is equivalent to about 840 Olympic-sized swimming pools

SAFETY

2439 people inducted

About 2,323,190 person
hours

About 1528 pieces of
plant mobilised

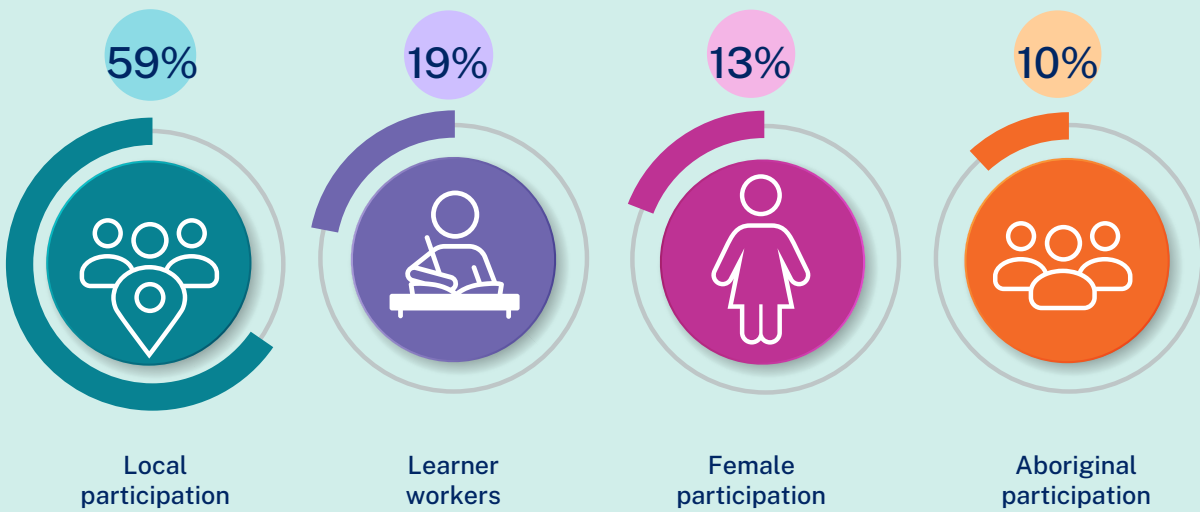
*Data is cumulative and
calculated from the start
of major construction.



July 2024

REPORT CARD

OUR PEOPLE



Data includes Transport for NSW, Aurecon, FGJV, design team, subcontractors and supply chain. Local participation is identified as being in the Coffs Harbour, Clarence Valley, Bellingen and Nambucca Valley.



Project environmental managers with one of the high efficiency sediment basins in the background

ENVIRONMENT & SUSTAINABILITY

Using high efficiency sediment basins reaps rewards

The project is being innovative, by using high efficiency sediment basins (HESBs) to better manage water across the alignment. The Environmental Protection Agency has confirmed it is the first time this innovation has been used in construction in New South Wales.

The HESBs are a continuous-flow basin where water entering the basin is treated and either stored, or re-used on site for dust suppression.

Testing of the water in the HESBs after January rainfall, proved the basins are working well, with their water quality showing an average improvement of 16 percent when compared to the water in standard sediment basins.

COMMUNITY & STAKEHOLDER ENGAGEMENT

Final Place Design and Landscape Plan now available

It's been in the works for a long time, and now, the final plan for the bypass' place and visual amenity is completed and available on the project's website [here](#).

Community consultation on the draft plan occurred in December 2023. A Consultation Summary Report has been prepared providing responses to the feedback received.



England's Road Interchange western roundabout was paved in July

CONCRETE

cubic metres of concrete used on the project*.

10.2%

of 170,000 cubic metres total completed to date.

*17,327 cubic metres of concrete is equivalent to about seven Olympic-sized swimming pools

CONTROLLED BLASTING

61

CONTROLLED BLASTS
completed at cut sites

PAVEMENT



Temporary asphalt batch plant under construction

The project is setting up a temporary asphalt batch plant within the construction boundary from August to October 2024.

The batch plant will be located off North Boambee Road, within the existing laydown area to the west of the main

construction site compound. This is an ancillary site identified and approved in the project's Environmental Impact Statement and Amendment Report.

The batch plant will supply about 290,000 tonnes of asphalt for building the bypass.