

Vegetation removal on the Pacific Highway, Boambee

Coffs Harbour bypass

April 2024



Transport for NSW acknowledges the Gumbaynggirr people as the Traditional Custodians of the lands on which we work and pays respect to Elders past and present.

The Australian and NSW Governments are funding the \$2.2 billion, 14-kilometre Coffs Harbour bypass project. The bypass will boost the regional economy and improve connectivity, road transport efficiency and safety for all motorists.

What work are we doing?

As part of major construction, the Coffs Harbour bypass project is removing vegetation on the eastern side and centre median of the Pacific Highway, Boambee between Sawtell Road Interchange and the roundabout at Stadium Drive and Englands Road.

When and where we'll be working

Vegetation removal along Pacific Highway in this area will be carried out for six nights between **Wednesday 17 April 2024 and Friday 3 May 2024** from **7pm to 6am**. If rain interrupts this work, it will be completed during the following week.

What will this mean for you?

During this work, there will be a single temporary lane closure on both the Pacific Highway northbound and southbound carriageways between Stadium Drive and Sawtell Road Interchange, Boambee. Removing vegetation requires chainsaws, an excavator, slasher, light and heavy vehicles, and lighting towers.

Flora and Fauna

The project follows strict protocols for tree removal including a two-stage process to reduce impacts on native animals and to relocate threatened plants.

This process includes delineating vegetation removal areas and exclusion zones and pre-clearing surveys by qualified and experienced ecologists. An ecologist supervises all tree felling activities.

The ecologist assesses all trees in the area to identify any native animals living in them. These habitat trees typically contain hollows that could be used by native fauna. The habitat trees are tagged and not felled for at least 48 hours after felling of non-hollow bearing trees. This process allows animals to relocate as other vegetation removal work is carried out and has proven to be a successful method from previous projects undertaken by Transport for NSW.

Additionally, when habitat trees are felled, it is done using a specific method to minimise any disturbance to native animals. All felled habitat trees are inspected by the project ecologist and they also carry out a health assessment on any fauna. If the fauna is determined to be healthy, they are released into adjacent habitat. Any injured fauna are taken into care including use of local wildlife carer groups.

For more information, read the Vegetation removal and landscape restoration factsheet on our website.

Managing our impacts

To minimise noise impacts, we switch off vehicles and equipment when not in use and work closer to residential properties and undertake noisier work earlier in the night, where possible.

The predicted noise level for this work is quiet to noisy. We have provided a diagram to show the comparison of these noise levels.



During night work, there will be speed reductions, lane closures and traffic control on the highway to ensure the safety of workers and motorists.

Please keep to the speed limit and follow the direction of traffic controllers and signs. For the latest traffic updates, you can call 132 701, visit livetraffic.com or download the Live Traffic NSW App.

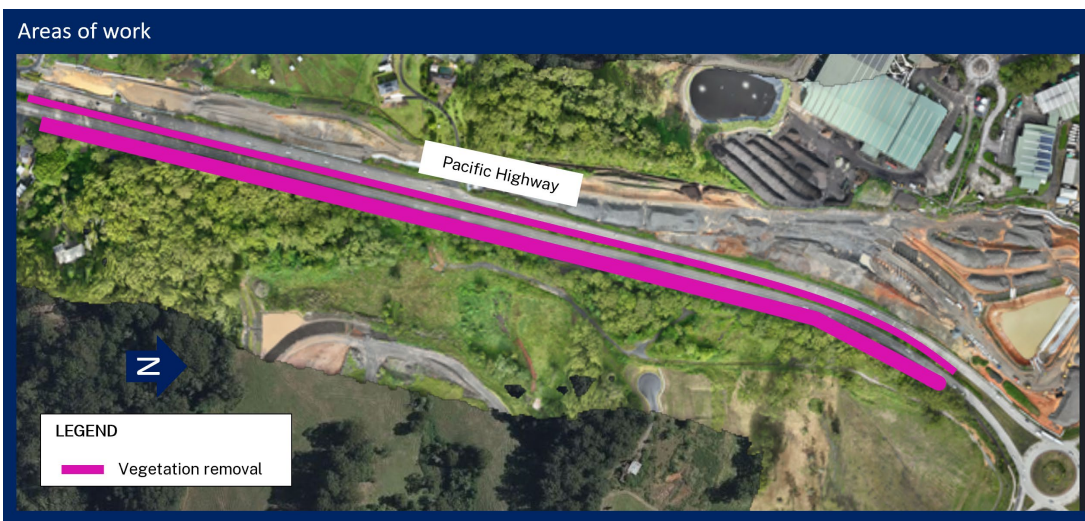
Current and upcoming work

Other construction work in this area includes:

- Out of hours delivery of concrete from the batch plant at Englands Road, North Boambee along the alignment and concrete pouring for bridges, culverts and retaining walls to meet construction requirements

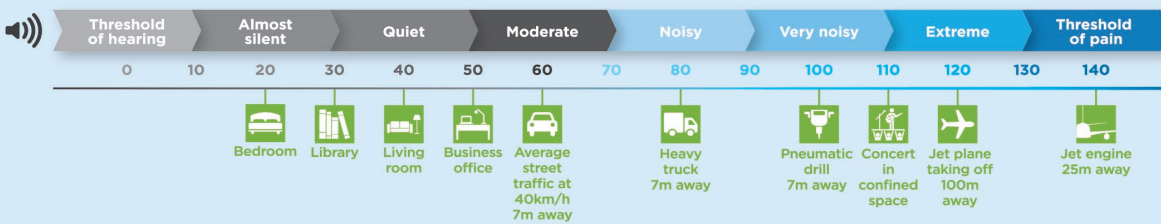
- Out of hours refuelling and plant and machinery maintenance along the alignment
- Bulk earthwork and drainage along the alignment – this may include extended hours on Saturdays
- Controlled blasting at various locations along the alignment
- Out of hours refuelling and plant and machinery maintenance
- Out of hours internal haulage route and environmental controls maintenance
- Installing and relocating fencing
- Revegetating areas within the project boundary.

Location of work



Comparison in noise levels

Sound levels in decibels (approximate)



Contact us



Project information and 24-hour construction response line **1800 550 621**



View our **community information van** timetable



community@CHBteam.com.au



For the latest traffic updates:
Call 132 701, visit livetraffic.com or download the app Live Traffic NSW



pacifichighway.nsw.gov.au/coffsharbourbypass



Interpreter service
For languages other than English call 131 450



PO Box 565, Toormina, NSW 2452

www.transport.nsw.gov.au/privacy-statement#Your_Privacy