

Vegetation maintenance on the Pacific Highway, Boambee

Coffs Harbour bypass

March 2024



Transport for NSW acknowledges the Gumbaynggirr people as the Traditional Custodians of the lands on which we work and pays respect to Elders past and present.

The Australian and NSW Governments are funding the \$2.2 billion, 14-kilometre Coffs Harbour bypass project. The bypass will boost the regional economy and improve connectivity, road transport efficiency and safety for all motorists.

What work are we doing?

As part of major construction, the Coffs Harbour bypass project is carrying out vegetation maintenance on the Pacific Highway between south of Sawtell Interchange and north of the intersection of the Pacific Highway, Englands Road and Stadium Drive.

When and where we'll be working

Vegetation maintenance along the Pacific Highway in this area will be carried out for **three nights** from **Monday 25 March 2024** between **7pm to 6am**. If rain interrupts this work, it will be completed the following week. A map showing the location of this work is provided on the next page.

What will this mean for you?

During this work, there will be speed reductions, traffic control, and temporary single lane closures on both the Pacific Highway northbound and southbound carriageways.

Please keep to the speed limit and follow the direction of traffic controllers and signs. For the latest traffic updates, you can call 132 701, visit livetraffic.com or download the Live Traffic NSW App.

Managing our impacts

Vegetation maintenance requires a tractor with a slasher attachment.

To minimise noise impacts, we will switch off vehicles and equipment when not in use and work closer to residential properties and undertake noisier work earlier in the night, where possible.

The predicted noise level for this work is quiet to noisy. We have provided a diagram to show the comparison of these noise levels on the following page.

During night work, there will be speed reductions, lane closures and traffic control on the highway to ensure the safety of workers and motorists.

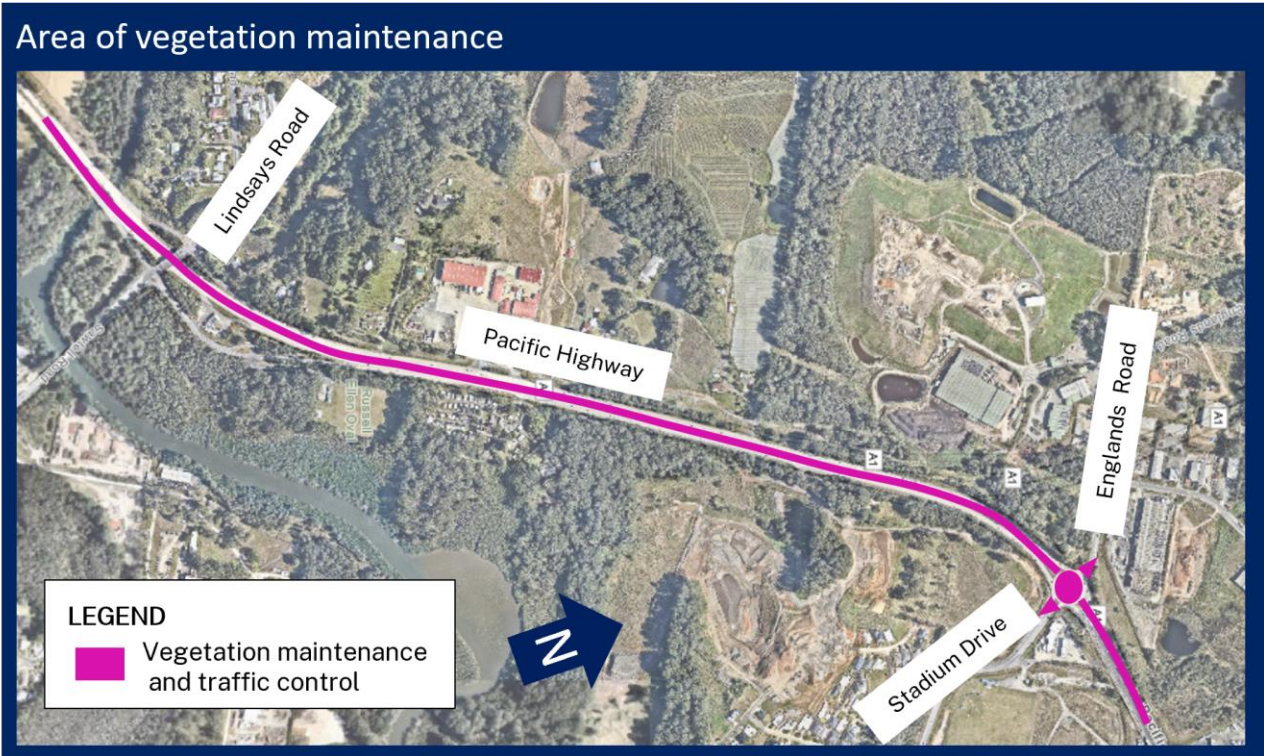
Current and future work

Construction in this area includes:

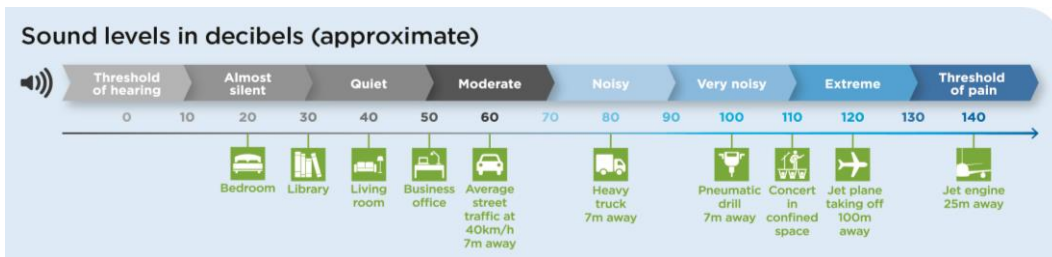
- Out of hours concrete deliveries and pouring
- Out of hours watercart operations and prestart of mobile crushing equipment
- Out of hours environmental controls maintenance
- Out of hours continuous concrete pours
- Out of hours vegetation removal on the eastern side of the Pacific Highway, Boambee
- Carrying out bulk earthworks and installing culverts and drains
- Installing and relocating fencing
- Revegetating areas in the project boundary
- Building and maintaining environmental controls.
- Installing and relocating fencing



Location of work



Comparison in noise levels



Contact us



Project information and 24-hour construction response line **1800 550 621**



View our **community information van** timetable



community@CHBteam.com.au



For the latest traffic updates:
 Call 132 701, visit livetraffic.com or download the app Live Traffic NSW



**pacifichighway.nsw.gov.au/
 coffsharbourbypass**



Interpreter service
 For languages other than English call 131 450



PO Box 565, Toormina, NSW 2452

www.transport.nsw.gov.au/privacy-statement#Your_Privacy