

February / 2024  
**REPORT CARD**

**THE LIGHT AT THE START OF THE TUNNEL**

Site establishment and portal preparation work is progressing well at the Gatelys Road Tunnel. Controlled blasting inside the tunnel will commence in late February with 24/7 operations to follow in coming months. The team has started work on almost half of the 17 bridges and the three interchanges are taking shape ahead of some bigger traffic switches later in the year. We appreciate your patience while we build the bypass and look forward to sharing our progress with you this year.

**PROGRAM & MILESTONES**

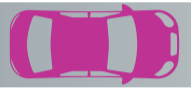
**Completed**

- ✓ Pine Brush Creek realignment
- ✓ First minor traffic switches at Korora
- ✓ Site establishment and portal preparation at Gatelys Road Tunnel
- ✓ Started work on eight bridges
- ✓ Started controlled blasting at five cut locations

**Looking forward**

- Shephards Lane realignment
- Bennetts Road realignment
- Finalise Place Design and Landscape Plan
- Prepare Roberts Hill and Shephards Lane tunnel portals
- Start building the bridge over the North Coast Railway Line near Shephards Lane
- Continue controlled blasting and bridge construction at new locations

32% complete

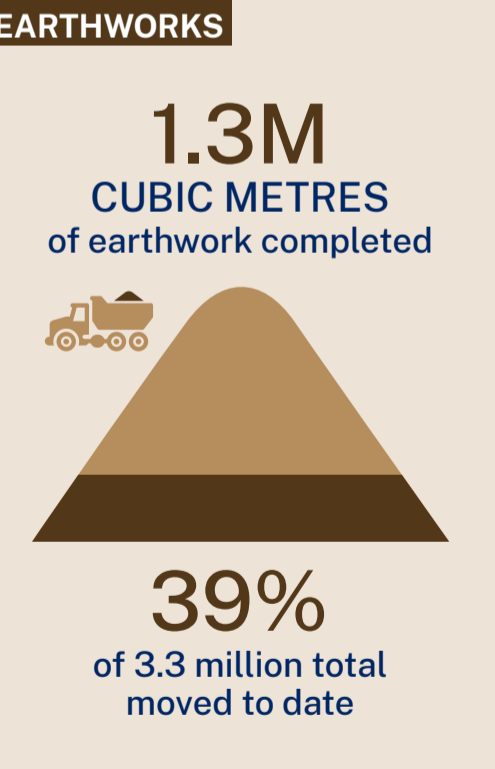


Percentage complete refers to contract completion and includes design and construction.

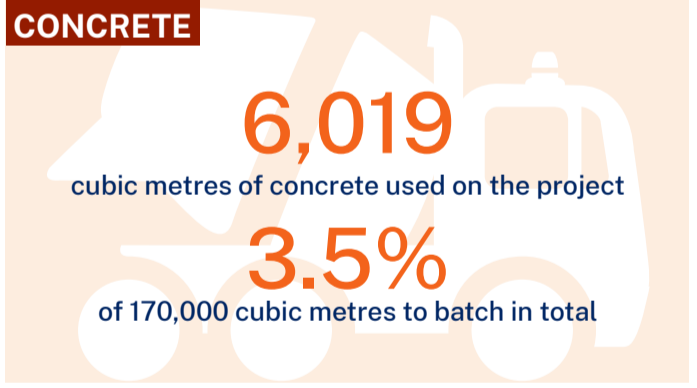
**STRUCTURES**



**EARTHWORKS**



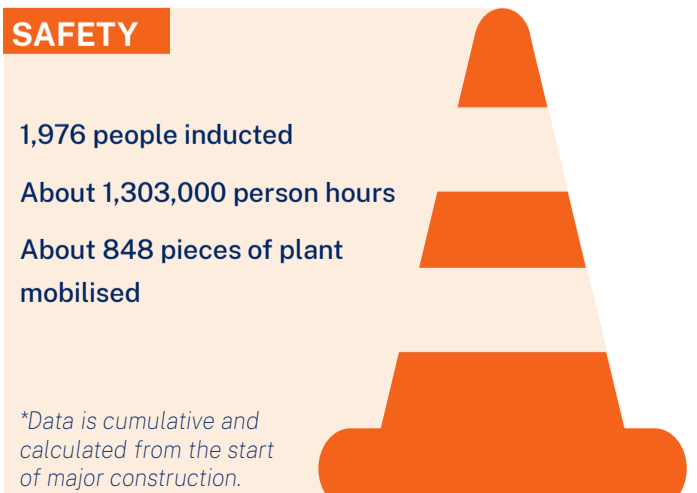
**CONCRETE**



**CONTROLLED BLASTING**

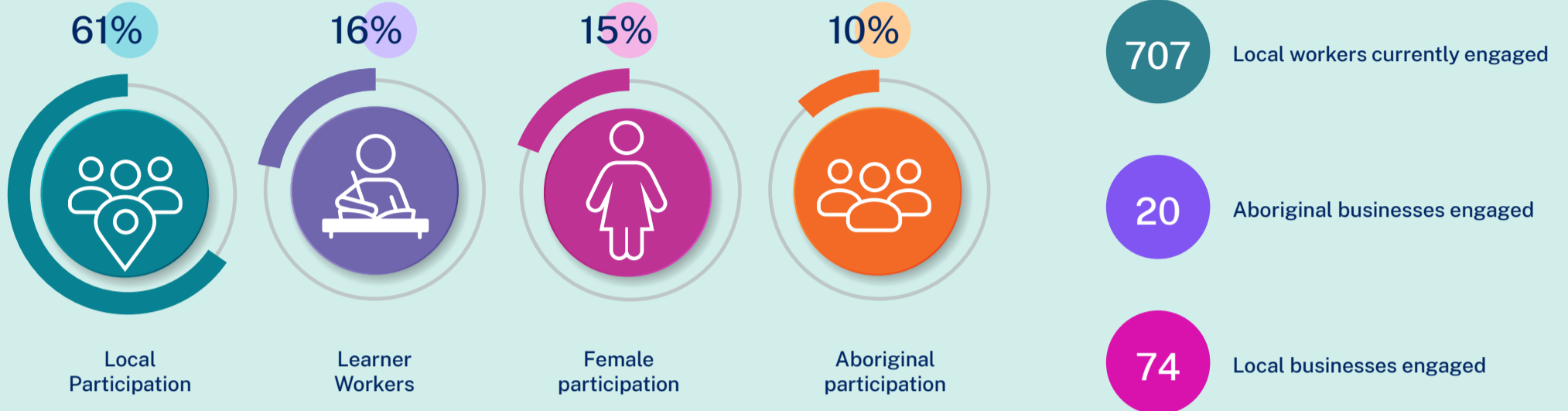


**SAFETY**



# REPORT CARD

## OUR PEOPLE



Data includes Transport for NSW, FGJV, design team, subcontractors and supply chain. Local participation is identified as being in the Coffs Harbour, Clarence Valley, Bellingen and Nambucca Valley LGAs

Crane operator preparing for a lift at Gatelys Road southern portal



## ENVIRONMENT & SUSTAINABILITY

### First high-efficiency sediment basins in NSW

The Coffs Harbour bypass is home to five of the first high-efficiency sediment (HES) basins licensed by the NSW Environment Protection Authority (EPA). HES basins are structures designed to capture sediment from stormwater runoff and treat the water for re-use. Using HES basins allows us to treat a much greater volume of runoff because dosing is automated and occurs during the rainfall event rather than after. The water captured in our HES basins gets stored and reused for construction because they do not require emptying like traditional basins. For more information read our water quality fact sheet online.



## COMMUNITY & STAKEHOLDER ENGAGEMENT

### Community engagement satisfaction survey

The results are in from the community engagement satisfaction survey we released late last year. We appreciate you taking the time to share your thoughts on our construction activities and how we engage about them. Keep your eye on our website for a snapshot report highlighting the results and our response to the feedback. The next survey will be released in May 2024.

### We're launching a quarterly photo book shortly

Many of the people who responded to the community engagement satisfaction survey noted they would like to see more regular photographs of our construction activities and progress. In response, we will release a quarterly photo book offering an inside look at how we are building the bypass.

Englands Road Interchange

